

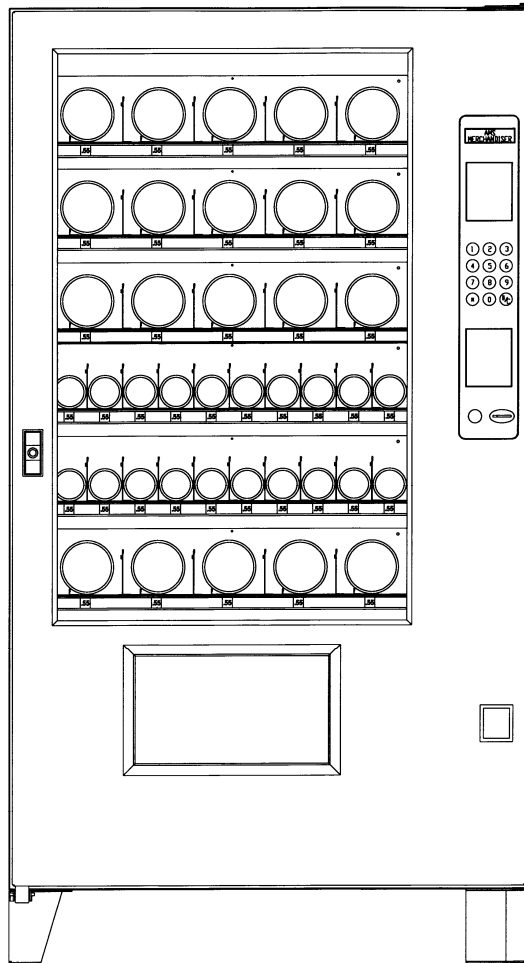


39" VCB
AND
39" VCF*

GLASS FRONT MERCHANDISER ILLUSTRATED PARTS MANUAL

LOO76, REV. F

*Designates vendors with Health and Safety protection for vending perishable food.



AUTOMATED MERCHANDISING SYSTEMS INC
255 WEST BURR BLVD.
KEARNEYSVILLE, WV 25430
304-725-6921 - Fax 304-725-6983

info@amsvendors.com
www.amsvendors.com

INTERNATIONAL A.M.S. S DE RL DE CV
KM. 9 CARR. AL CASTILLO NO. 8200
MPIO. DE EL SALTO, JAL. MEXICO 45680
5233-3-6-88-07-17 - Fax 5233-3-6-88-13-14

servicio@amsint.com.mx
www.amsint.com.mx

AMS Glass Front Merchandiser
39-VCB and 39-VCF
Illustrated Parts Manual

Table of Contents

<u>SECTION</u>	<u>PAGE</u>
INTRODUCTION	
Table of Contents	3
General Introduction	4
Manual Organization	4
Merchandiser Identification	5
Patent Disclosure	6
Publication Notice	6
CABINET	
Cabinet Components and Screens	8
Cabinet and Parts for VCB and VCF Vendor	10
CHILLER	
Chiller Parts – Top View	14
DOOR	
Door, Coin Bay	16
Door, Hinges, Lighting and Glass	18
Door, External Parts	20
Door, Window Cover Parts	24
Door, Hopper with Sensit III	26
POS Display	28
ELECTRICAL HARNESSSES	30
TRAYS	
1.5” Helix Tray	50
Bottle Tray	52
Snack, Candy, Food Tray	54
Scrolling Price Tray	56
Helix	58

GENERAL INTRODUCTION

The purpose of this manual is to give our customers a way of identifying major service parts for repair and replacement. The illustrations and parts list in this manual are for identification of these service parts only.

Illustrations of these major parts are keyed with our part numbers. The illustrations help identify the general design, position and orientation of these parts. The note section may also give important information.

Please refer to the section on merchandiser identification on the following pages. Without the model style and serial number it may be difficult to identify the required part.

Parts should be ordered from your distributor.

It is our intent to assist our customers with up-to-date documentation. However, this manual may not show all parts, variations or changes. Some parts may be shown slightly out of scale. This manual is itself subject to change without notice. If any errors are found, please notify AMS so the correction can be included in later revisions. Engineering data and third party information are generally not included. The graphical data, group assembly data, parts, part assembly, parts breakout information and tabular data conveyed by this manual is proprietary and belongs to AMS, and holders without prior consent of or without knowledge of and by AMS must surrender this data immediately.

All measurements are in inches except where specified as Metric.

MANUAL ORGANIZATION

This manual is divided into sections representing the general parts of our merchandisers. Each section is further divided into the various subsections or subassemblies of the machine. Each subsection leads off with one or more illustrations showing the parts. Each part shown is identified with the part number.


After the illustrations, the part number in the illustration is paired with our drawing description or title for that part. In some instances there may be multiple parts to choose from. However, the correct service or repair part for the style of merchandiser must be selected. There is a note section where additional information may be found.

A quantities column in the list provides information on the total quantities required for each set-up as shown. Some assemblies are fabricated as a unit at AMS and are replaceable only as a complete assembly. Optional parts identify parts contracted for and installed in the factory at AMS.

This manual contains model and style information for a vendor as found in previous revisions or parent manuals, including corrections. It may also contain additional and new information, especially if it is specific to your new vendor. Previous revisions of this manual should be kept for use with the vendor it was issued for.

MERCHANDISER IDENTIFICATION

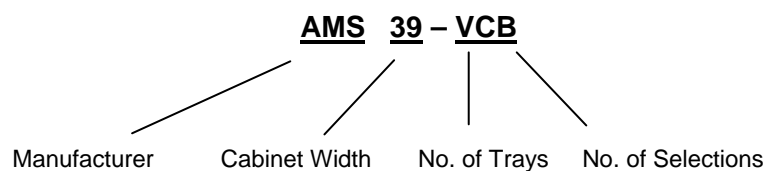
When requesting service, replacement parts or technical assistance, please use the **Model Number** and the **Serial Number with Date Code**, found on the Serial Plate (Refer to Figure 1) affixed to the merchandiser. The plate is usually located inside the door, visible through the window. The information contained on this plate is necessary to determine what parts, kits, or maintenance apply to your vendor.

 <small>AUTOMATED MERCHANDISING SYSTEMS, INC. KEARNEYSVILLE, WV 25430</small>	FOR INDOOR USE ONLY	
	MODEL NUMBER: AMS XX-XXX SERIAL NUMBER: XXX-XXXX XX	DESIGN PRESSURES _____ R 134a _____ PH _____ VOLTS _____ AMPS _____

72-002 Serial Plate

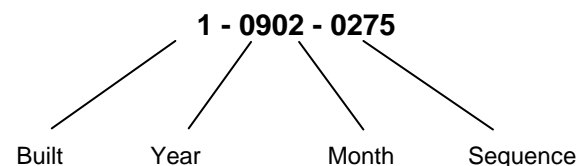
Figure 1. Example of Typical Serial Plate

Example of Model Number Breakdown



Example: AMS39-VCB means this vendor is an Automated Merchandising Systems merchandiser, **39"** wide, without Health and Safety protection.

Example of Serial Number and Date Code Breakdown



Example: 1-0902-0275 is translated as U.S. built (**1**), manufactured in 2009, month of February, and was the 275th manufactured that year.

Note: Manufactured in Mexico, Built = (2)

PATENT DISCLOSURE

This merchandiser and/or certain of its components are covered by one or more of the following U.S. and international patents;

U.S. PATENTS: 6,041,962; 6,145,699; 6,202,888; 6,384,402; 6,520,373; 6,708,079; 6,794,634; 7,191,915; 7,343,220; 7,446,302; 7,742,837.

CANADIAN PATENT 2,329,314.

MEXICO PATENT 230714.

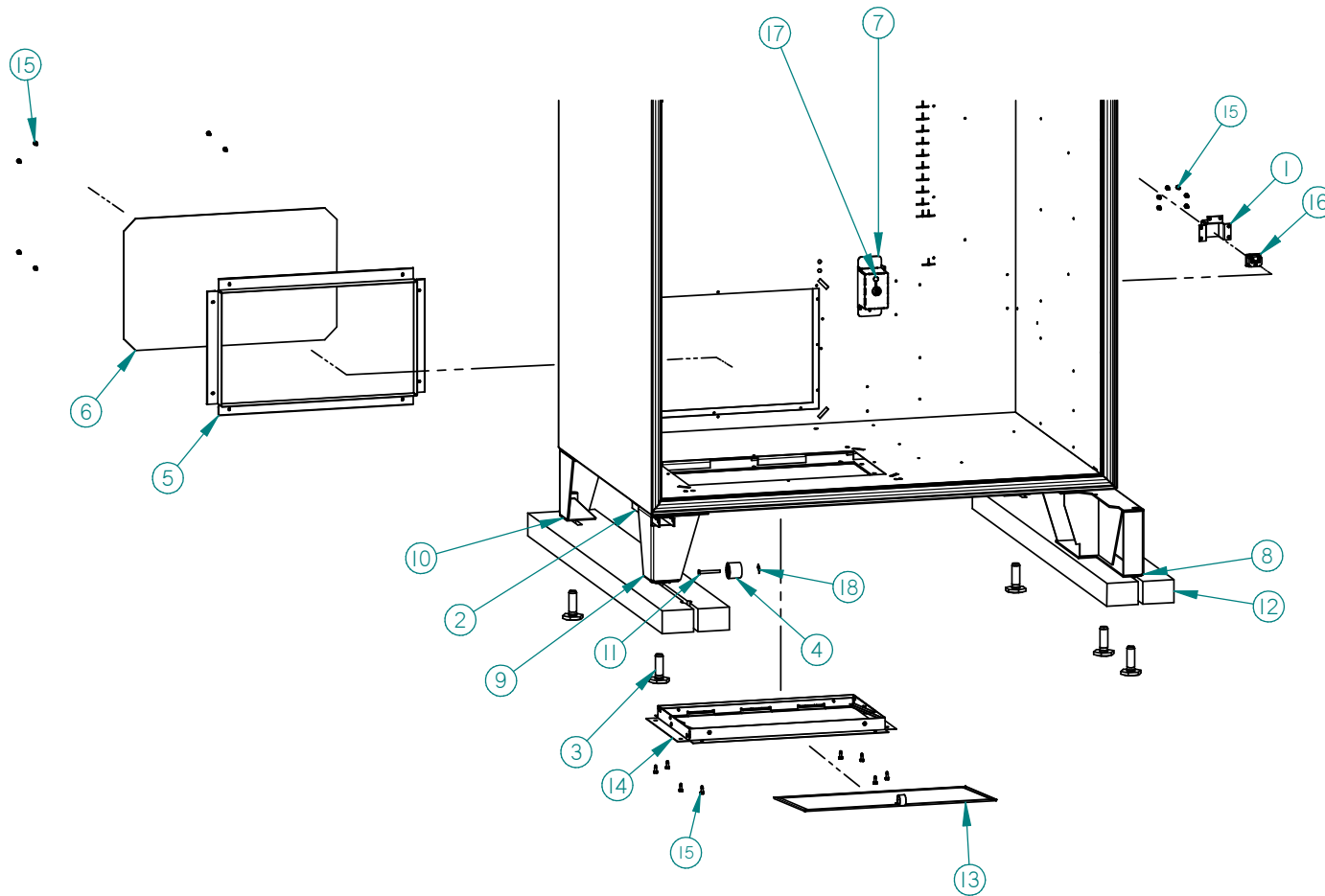
PUBLICATION NOTICE

L0076, Revision F, 07/30/10

It is our intent to assist our customers with up-to-date documentation: however, this manual may not contain all updates and is subject to revision without notice. Please contact our Service Department with your requests or comments.

THIS PAGE INTENTIONALLY LEFT BLANK

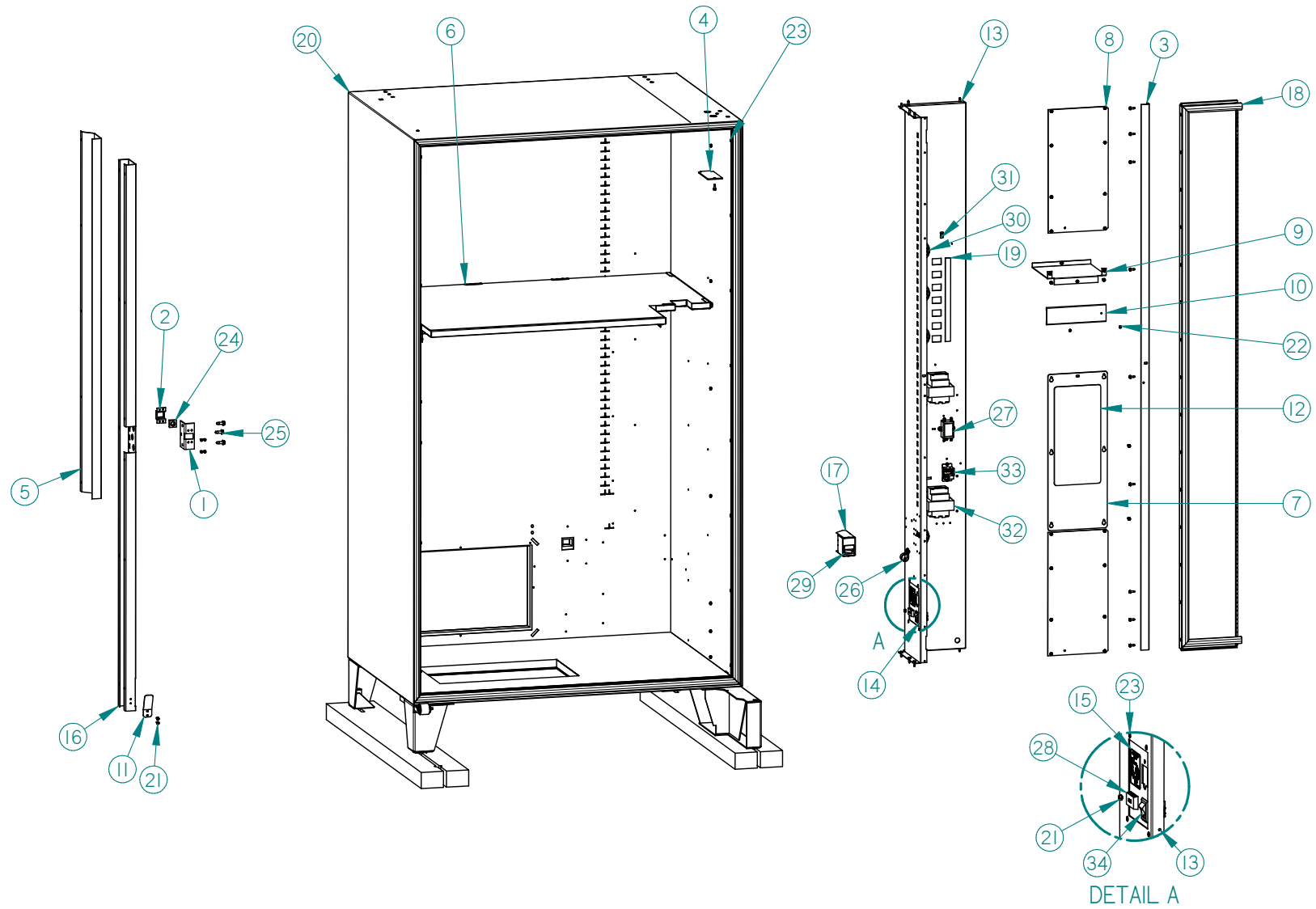
CABINET COMPONENTS AND SCREENS ILLUSTRATION



CABINET COVERS AND SCREENS PARTS LIST

ITEM	PART NO.	PART DESCRIPTION	NOTES
1	20608	POWER CORD COVER	
2	20019	ROLLER BRACKET	
3	20121	LEVELING LEG	
4	20177	ROLLER	
5	20275	REAR TRIM	
6	20279	SCREEN, REAR CHILLER HOLE, 4 MESH	
7	20321	IEC INLET COVER	
8	21122	FRONT LEG ASSEMBLY	
9	21123	LEFT FRONT LEG ASSEMBLY	
10	21124	REAR LEG ASSEMBLY	(QTY 2)
11	21250	ROLLER SHAFT	
12	23231	SHIPPING BOARD	
13	23262	CONDENSER SCREEN ASSEMBLY	
14	23263	CONDENSER SCREEN HOLDER ASSEMBLY	
15	3000	SHEET METAL SCREW (1/4" HEX)	
16	3057	IEC INLET	
17	3080	STRAIN RELIEF	
18	3113	3/16 PUSH NUT	

CABINET PARTS FOR VCB AND VCF ILLUSTRATION



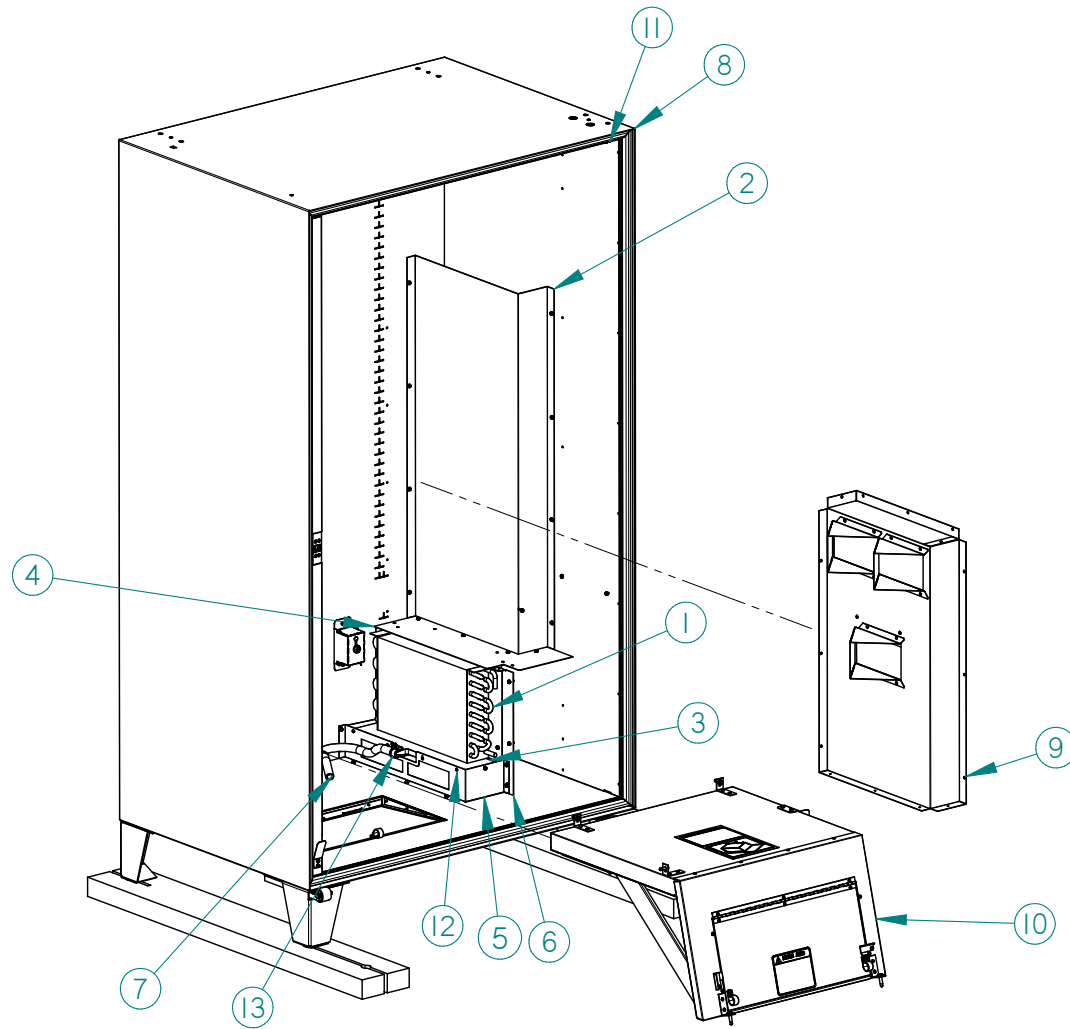
CABINET PARTS FOR VCB AND VCF PARTS LIST

ITEM	PART NO.	PART DESCRIPTION	NOTES
1	20135	LOCK, FLANGE	
2	20136	LOCK, CAGE	
3	20213	FLANGE, RIGHT VERTICAL	
4	20291	COVER PLATE, HINGE HOLE	
5	20481	LEFT VERTICAL RAIL EXTENSION	
6	20790	BULKHEAD ASSEMBLY, VISI-COMBO	OPTIONAL
7	20880	TRANSFORMER COVER PLATE	
8	20882	COVER PLATE	
9	20907	BULKHEAD	
10	21053	STIFFENER	
11	21087	DOOR SWITCH PLATE	
12	21324	WARNING DECAL	
13	21477	RIGHT RAIL MOUNT	
14	21479	SWITCH AND FUSE HOLDER PLATE	
15	21509	FUSE DECAL	
16	21689	LEFT VERTICAL RAIL MOUNT	
17	21691	FAN SWITCH ENCLOSURE	
18	22005	RAIL MOUNT DOOR ASSEMBLY	
19	22041	TRAY POSITION DECAL	
20	22071	CABINET ASSEMBLY	
21	3000	SHEET METAL SCREW (1/4" HEX)	
22	3009-02	1/8" RIVET (1/8" GRIP)	
23	3009-04	1/8" RIVET (1/4") GRIP	
24	3010	SQUARE MACHINE NUT	
25	3018-06	SHEET METAL SCREWS (3/8" HEX)	
26	3024-12	CABLE CLAMP	
27	3030	RFI FILTER 115V	CHECK UNIT VOLTAGE
	3191	RFI FILTER 220V	
28	3133-30	FUSE HOLDER	
29	3199	ROCKER SWITCH	
30	3205-34	GROMMET	
31	3229	4" EXTENSION SPRING	NOT SHOWN
32	3257	TRANSFORMER 120V	CHECK UNIT VOLTAGE

	3258	TRANSFORMER 220V	
33	3274	RELAY	
34	3284	ROCKER SWITCH	
35	21079	CABLE ASSEMBLY, DOOR STOP	NOT SHOWN

THIS PAGE INTENTIONALLY LEFT BLANK

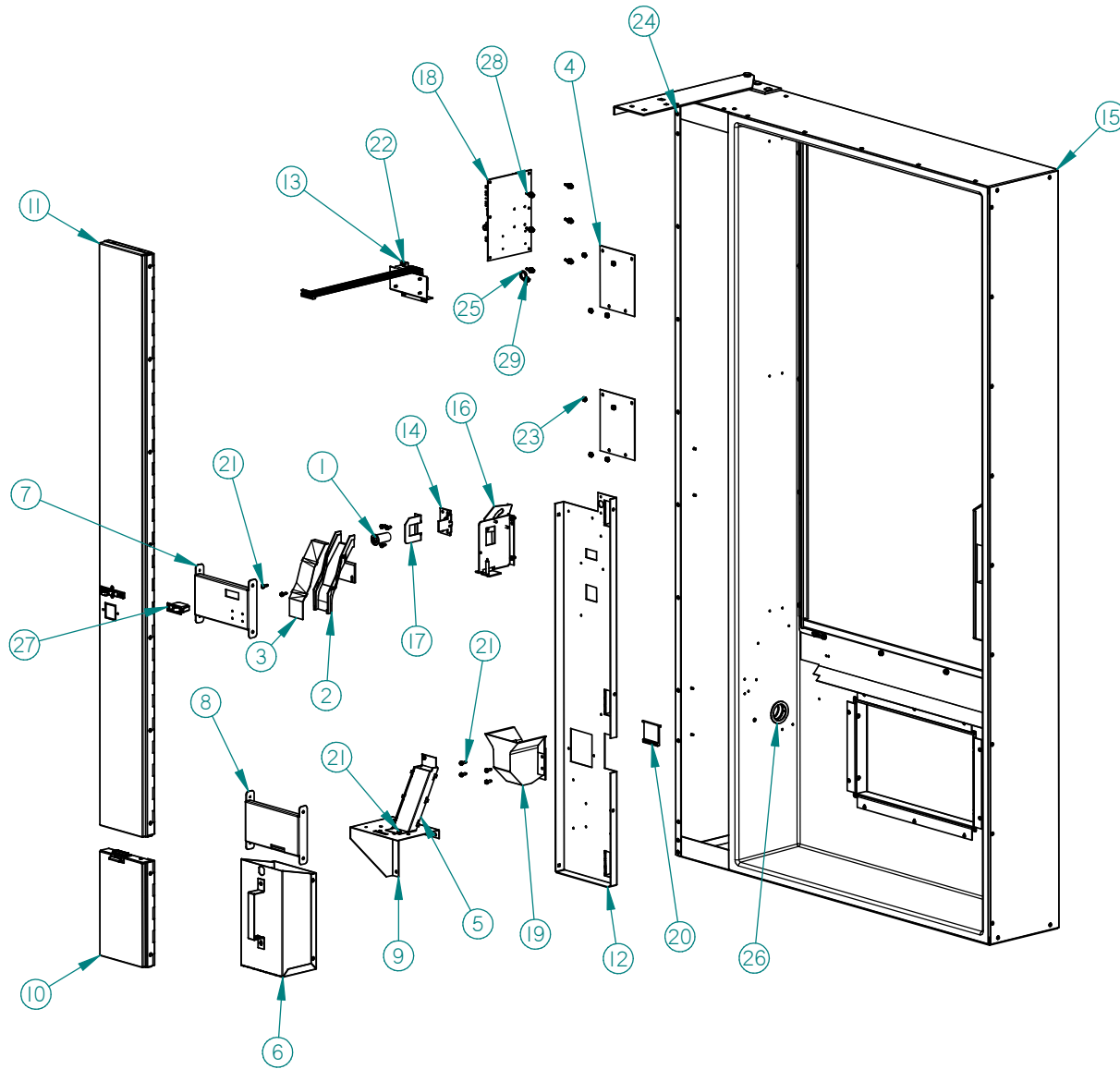
CHILLER PARTS ILLUSTRATION - SIDE VIEW



CHILLER - SIDE VIEW PARTS LIST			
ITEM	PART NO.	PART DESCRIPTION	NOTES
1	20034	CHILLER EVAPORATOR	
2	20317	EVAPORATOR PLENUM	STANDARD
3	21778	EVAPORATOR DRAIN PAN	
4	21987	EVAPORATOR COVER PLATE	
5	21990	EVAPORATOR DRAIN PAN SUPPORT	
6	21991	EVAPORATOR MOUNTING PAN	
7	22070	½" EVAPORATOR TUBING	
8	22071	CABINET ASSEMBLY	
9	22085	PLENUM ASSEMBLY	VISI-COMBO (OPTIONAL)
10	23219	CHILLER HOUSING ASSEMBLY	
11	3000	SHEET METAL SCREW (1/4" HEX)	
12	3009-02	1/8" RIVET	
13	3254-06	HOSE CLAMP	

NOTE: Chiller assemblies are charged with refrigerant and are replaceable only as an assembly.

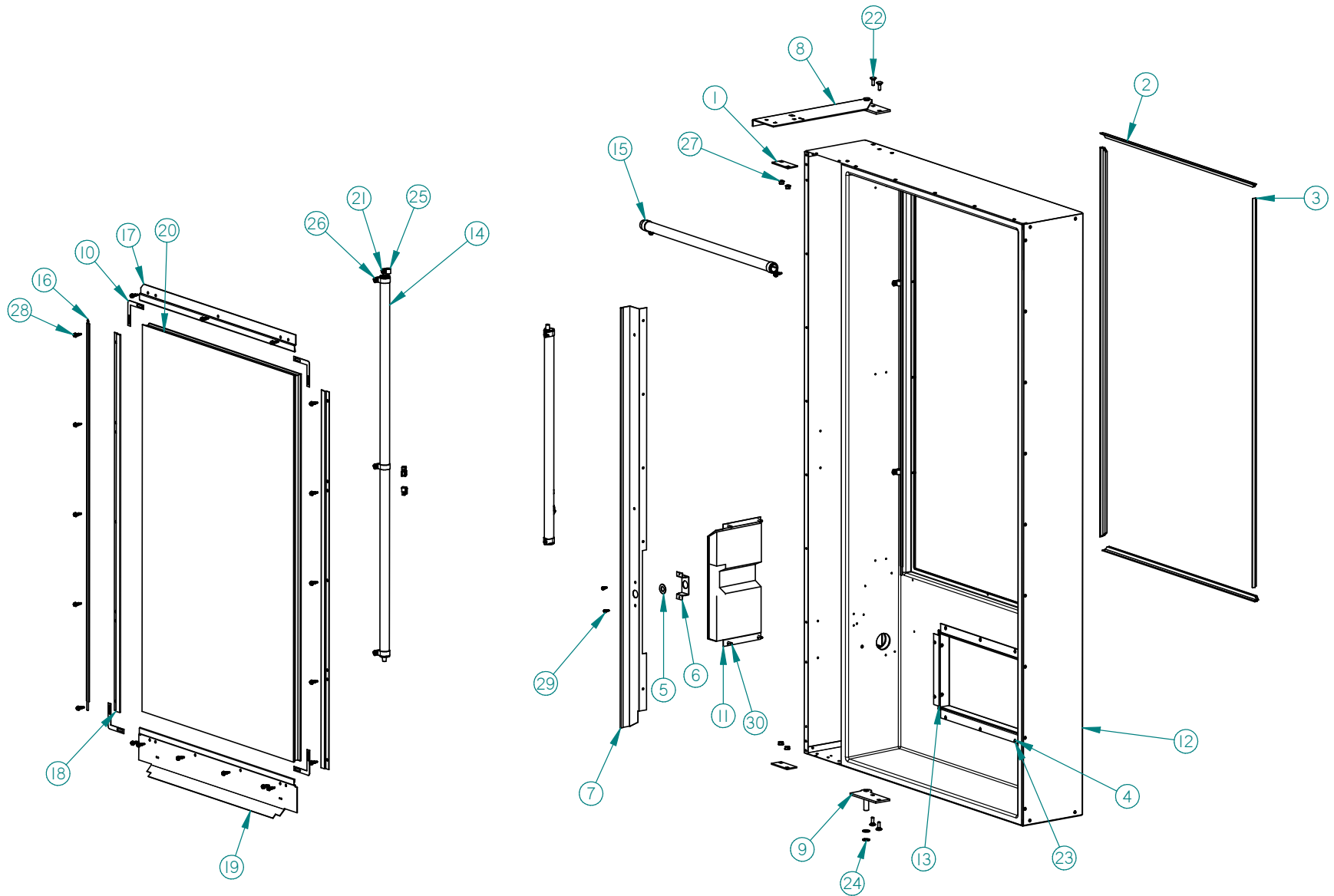
COIN BAY DOOR ILLUSTRATION



COIN BAY DOOR PARTS LIST

ITEM	PART NO.	PART DESCRIPTION	NOTE
1	20081	SCAVENGER BUTTON	
2	20099	COIN CHUTE INSERT	
3	20100	COIN CHUTE COVER	
4	20181	DBV COVER PLATE	
5	20339	COIN CHUTE ASSEMBLY	
6	20526	COIN BOX ASSEMBLY	
7	20845	UPPER DOOR STIFFENER	
8	20846	LOWER DOOR STIFFENER	
9	20933	COIN BOX BULKHEAD	
10	22003	LOWER COIN DOOR ASSEMBLY	
11	22004	UPPER COIN DOOR ASSEMBLY	
12	22171	CHANGER MOUNTING PANEL	
13	22305	DISPLAY VER. 2	
14	22335	PUSHBUTTON ALIGNMENT BRACKET	
15	22338	FOAMED DOOR ASSEMBLY	SEE DOOR EXTERNAL PARTS FOR DOOR P/N's
16	22343	SCAVENGER SYSTEM ASSEMBLY	
17	22367	SCAVENGER STOP BRACKET	
18	23021	CONTROL BOARD	
19	23369	COIN CUP BODY	
20	23370	COIN CUP DOOR	
21	3000	SHEET METAL SCREW (1/4" HEX)	
22	3001-03	SHEET METAL SCREW (1/4" HEX, BLUNT TIP)	
23	3006-08	HEX NUT 8-32	
24	3009-02	1/8" RIVET	
25	3070-07	CABLE TIE	
26	3205-24	GROMMET	
27	3226-02	LATCH	
28	3291	STANDOFF	
29	3292	TIE HOLDER	

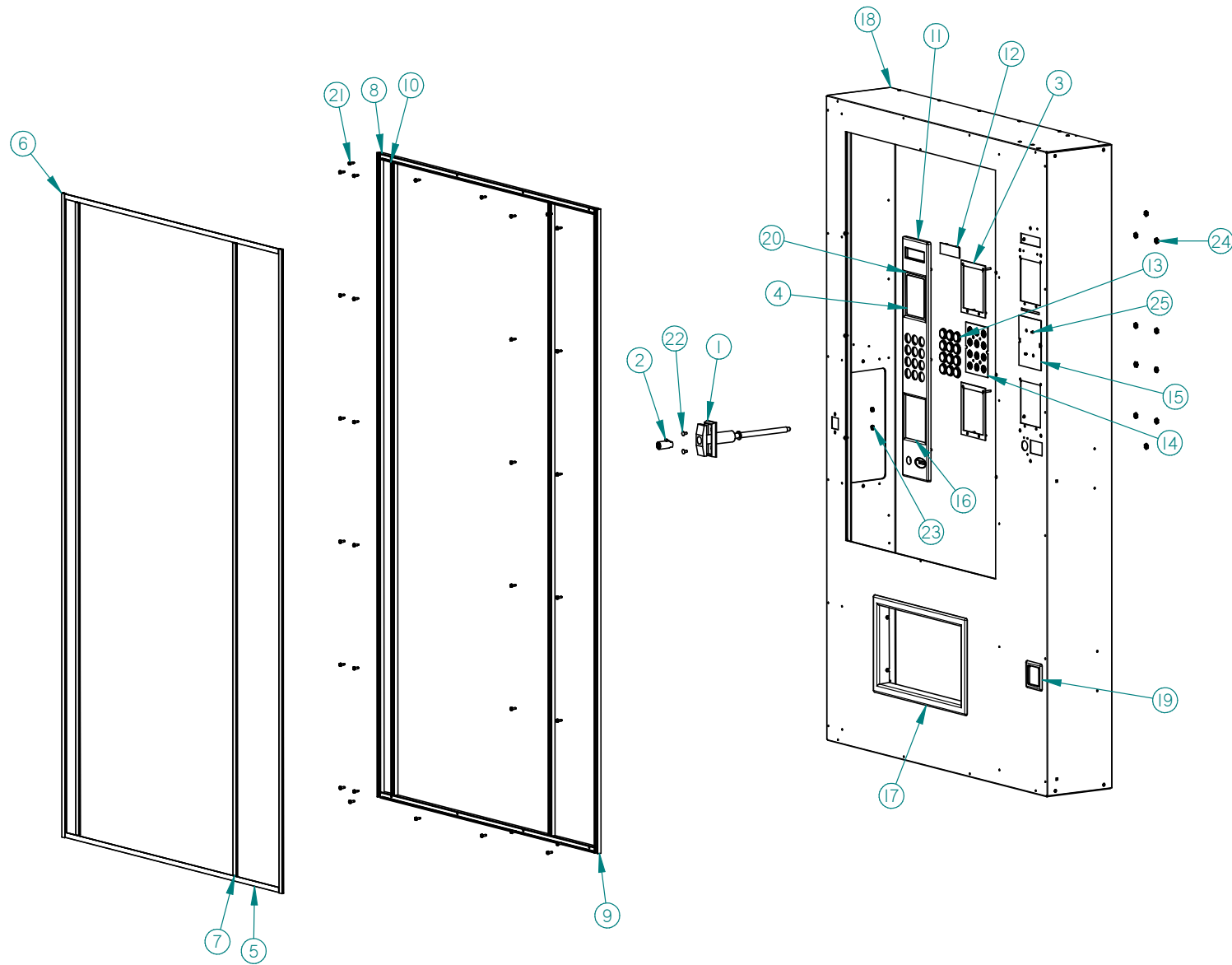
DOOR HINGES, LIGHTING AND GLASS ILLUSTRATION



DOOR HINGES, LIGHTING AND GLASS PARTS LIST

ITEM	PART NO.	PART DESCRIPTION	NOTE
1	20206	WASHER PLATE	
2	20330-03	WINDOW TRIM	
3	20330-04	WINDOW TRIM	
4	20401	HORIZONTAL EYELET RETAINER	
5	20852	T-HANDLE SEAL	
6	20857	LOCK BOLT BRACKET	
7	20965-01	TRAY RESTRAINT	
8	21703	TOP HINGE ASSEMBLY	
9	21704	BOTTOM HINGE ASSEMBLY	
10	22036	GLASS RETAINER CORNER	
11	22068	LOCK BOLT COVER	WITH FOAM
12	-----	FOAMED DOOR ASSEMBLY	SEE DOOR EXTERNAL PARTS FOR DOOR P/N's
13	22381	VERTICAL EYELET RETAINER	
14	23521	42" LED LAMP	OPTIONAL FOR DUAL LED LAMPS
15	23522	24" LED LAMP	
16	23562	VERTICAL LED LAMP VISOR	
17	23656-01	TOP GLASS RETAINER	
18	23657-01	VERTICAL GLASS RETAINER	
19	23658-01	BOTTOM GLASS RETAINER	
20	24035	1" WINDOW GLASS ASSEMBLY	
21	3000	SHEET METAL SCREW (1/4" HEX)	
22	3004-06	1/4-20 CARRIAGE BOLT	
23	3009-02	1/8" BLACK RIVET	
24	3023-15	FLAT NYLON WASHER	
25	3024-06	3/8" CABLE CLAMP	
26	3024-16	1" CABLE CLAMP	
27	3153-11	HEX NUT W/WASHER	
28	3251-06	#12 X 3/4 HEX WASHER TEK SCREW	
29	3342-04	SHEET METAL SCREW (1/4" HEX x 1/2")	
30	3342-06	SHEET METAL SCREW (1/4"HEX x 3/4")	

DOOR, EXTERNAL PARTS ILLUSTRATION



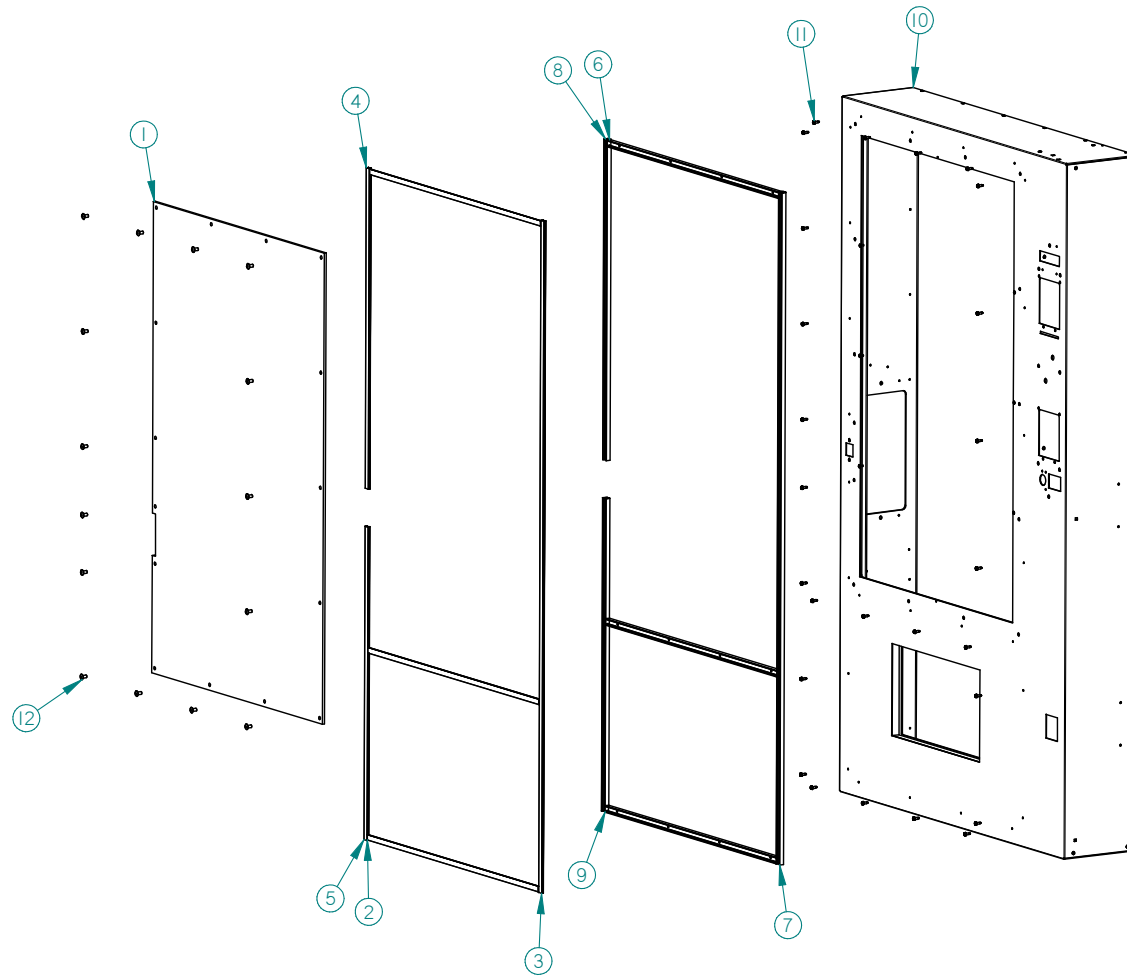
DOOR, EXTERNAL PARTS LIST

ITEM	PART NO.	PART DESCRIPTION	NOTE
1	20130	T-HANDLE ASSEMBLY	
2	20131	LOCK CYLINDER	
3	20344	DBV MOUNTING BEZEL ASSEMBLY	INCLUDES FOUR MOUNTING STUDS
4	20471	GUARANTEED DELIVERY DECAL	
5	21535-01	TRIM, PLASTIC INSERT	
6	21535-03	TRIM, PLASTIC INSERT	
7	21535-09	TRIM, PLASTIC INSERT	
8	21612-01	BLACK TRIM 37.2"	
9	21612-03	BLACK TRIM 65-38"	
10	21612-09	BLACK TRIM 64.19"	
11	21762	ESCUTCHEON	
12	22175	LENS	
13	22177	BUTTON	
14	22179	KEYPAD	
15	22180	MOUNTING PLATE	
16	22184	DBV COVER PANEL	(PLASTIC)
17	22238	VEND EYELET	
18	22338	ASSEMBLY, FOAMED DOOR, LOW TEMP	NO TRIM OPTION
	23196	ASSEMBLY, FOAMED DOOR, LOW TEMP, EXECUTIVE SERIES	23196-01 COLOR RED, 23196-02 COLOR BLUE
	23024	ASSEMBLY, FOAMED DOOR, LOW TEMP, ELITE SERIES	TRIM PACKAGE 23143-04
	22362	ASSEMBLY, FOAMED DOOR, LOW TEMP, COVERED WINDOW	NO TRIM OPTION
	22363	ASSEMBLY, FOAMED DOOR, COVERED WINDOW W/TRIM	
	23099	ASSEMBLY, FOAMED DOOR, ANTI VANDAL PANELS, LOCK COVER EXECUTIVE SERIES	23099-01 COLOR RED 23099-02 COLOR BLUE
19	23372	PLASTIC COIN CUP TRIM	
20	23825	COVER W/SLOT	USE WITH OPTIONAL PRINTER
21	3000	SHEET METAL SCREW (1/4" HEX)	

22	3005-04	10-24 CARRIAGE BOLT	
23	3006-10	10-24 HEX NUT	
24	3011	¼" SELF THREADING NUT	RETAINS ESCUTCHEON (21762)
25	3289-02	#8 PAN HEAD SCREW	
--	23069	LOCK COVER KIT	OPTIONAL ITEM (NOT SHOWN)
--	20603-01	INNER ANTI-VANDEL PLATE	OPTIONAL ITEM (NOT SHOWN)
--	20604-01	OUTER ANTI-VANDEL PLATE	OPTIONAL ITEM (NOT SHOWN)
--	3211-04	POWER CORD CLAMP	OPTIONAL ITEM (NOT SHOWN)

THIS PAGE INTENTIONALLY LEFT BLANK

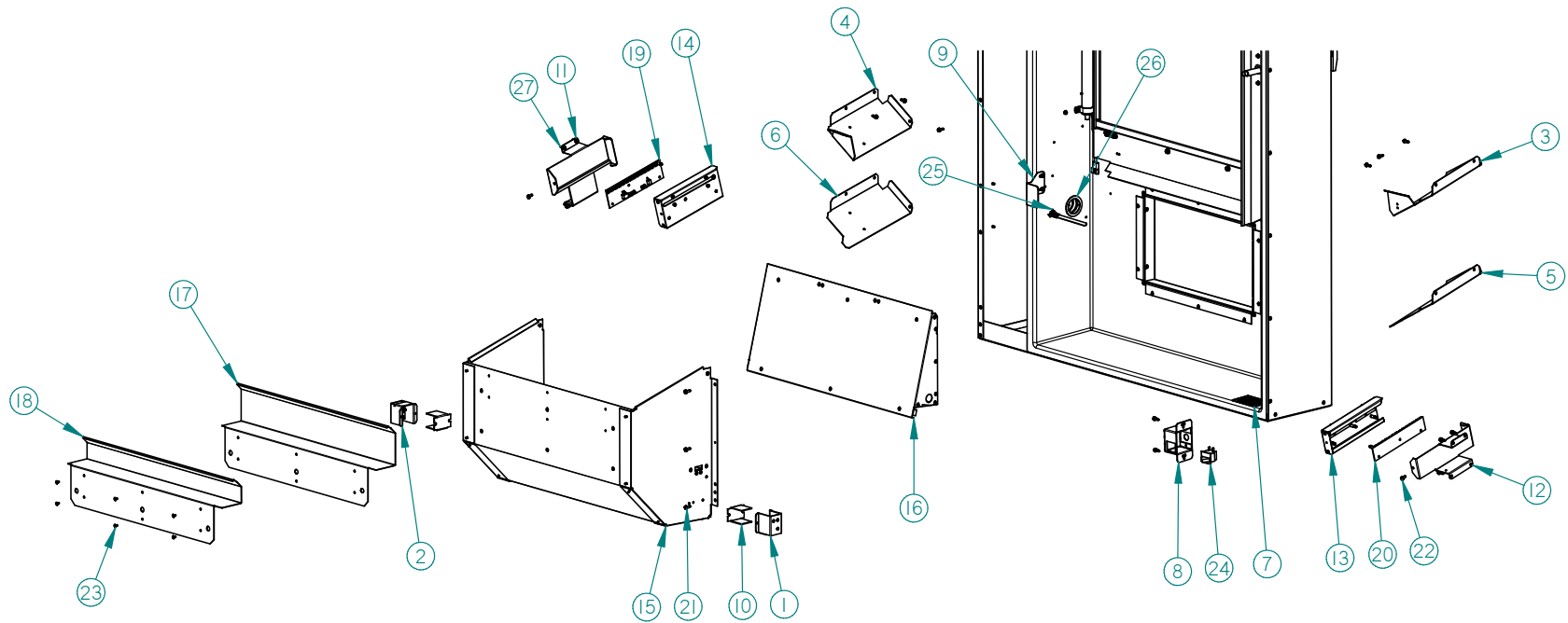
DOOR WITH WINDOW COVER PARTS ILLUSTRATION



DOOR WITH WINDOW COVER PARTS LIST

ITEM	PART NO.	PART DESCRIPTION	NOTES
1	20547	WINDOW COVER	(POLYCARBONATE)
2	21535-04	PLASTIC TRIM INSERT 29.19"	
3	21535-05	PLASTIC TRIM INSERT 63.25"	
4	21535-06	PLASTIC TRIM INSERT 30.17"	
5	21535-07	PLASTIC TRIM INSERT 29.48"	
6	21612-04	PAINTED TRIM 29.19"	
7	21612-05	PAINTED TRIM 63.25"	
8	21612-06	PAINTED TRIM 30.17	
9	21612-07	PAINTED TRIM 29.48	
10	22363	FOAMED DOOR ASSEMBLY	
11	3000	SHEET METAL SCREW (1/4" HEX)	
12	3172-02	ALUMINUM RIVET (1/4"DIA)	

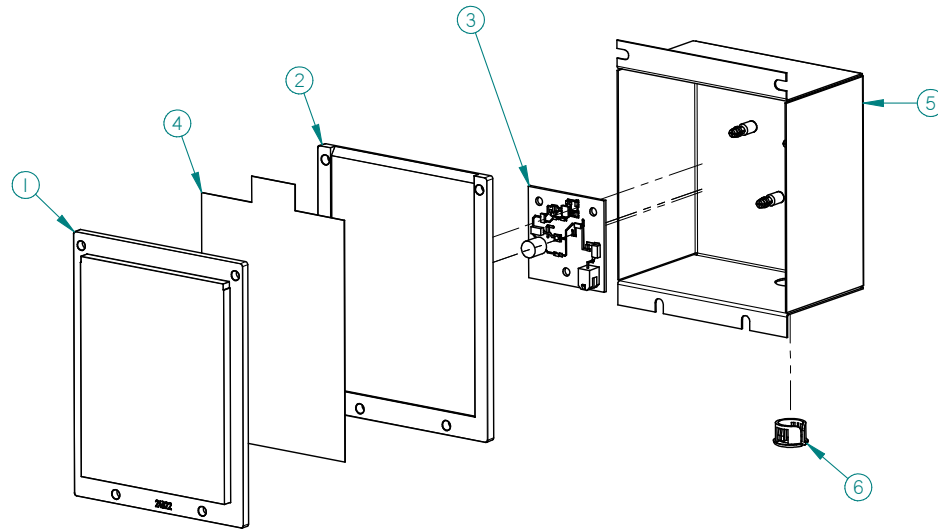
DOOR, PRODUCT HOPPER WITH SENSIT III ILLUSTRATION



DOOR, PRODUCT HOPPER WITH SENSIT III PARTS LIST

ITEM	PART NO.	PART DESCRIPTION	NOTE
1	21442	PRODUCT SENSOR EMITTER	OPTIONAL ITEM
2	21443	PRODUCT SENSOR DETECTOR	OPTIONAL ITEM
3	21457	LEFT PRODUCT KICKER VER 2	OPTIONAL ITEM
4	21459	RIGHT PRODUCT KICKER VER 2	OPTIONAL ITEM
5	21460	LEFT PRODUCT KICKER W/O FLANGE	OPTIONAL ITEM
6	21462	RIGHT PRODUCT KICKER W/O FLANGE	OPTIONAL ITEM
7	21625	CLEANING DECAL	
8	21690	DOOR SWITCH ENCLOSURE	
9	21692	FAN STRIKER PLATE	
10	21798	LENS, PRODUCT SENSOR	REQUIRED WITH ITEMS 1&2
11	22124	PRIMARY SENSOR BRACKET	
12	22126	SECONDARY SENSOR BRACKET	
13	22128	SECONDARY SENSOR COVER	
14	22130	PRIMARY SENSOR COVER	
15	22202	HOPPER ASSEMBLY	
16	22204	VEND DOOR ASSEMBLY	
17	22386	DEFLECTOR PLATE, VISI-COMBO	
18	22390	DEFLECTOR PLATE, 1 3/4"	
19	24342	PRIMARY SENSOR BOARD	
20	24343	SECONDARY SENSOR BOARD	
21	3000	SHEET METAL SCREW (1/4" HEX)	
22	3001-03	SHEET METAL SCREW (1/4" HEX, BLUNT TIP)	
23	3009-02	1/8" STEEL RIVET	
24	3036	ROCKER SWITCH	
25	3081	WIRE TIE, PANEL MOUNT	
26	3205-24	GROMMET	
27	3342-04	SHEET METAL SCREW (3/8" HEX)	

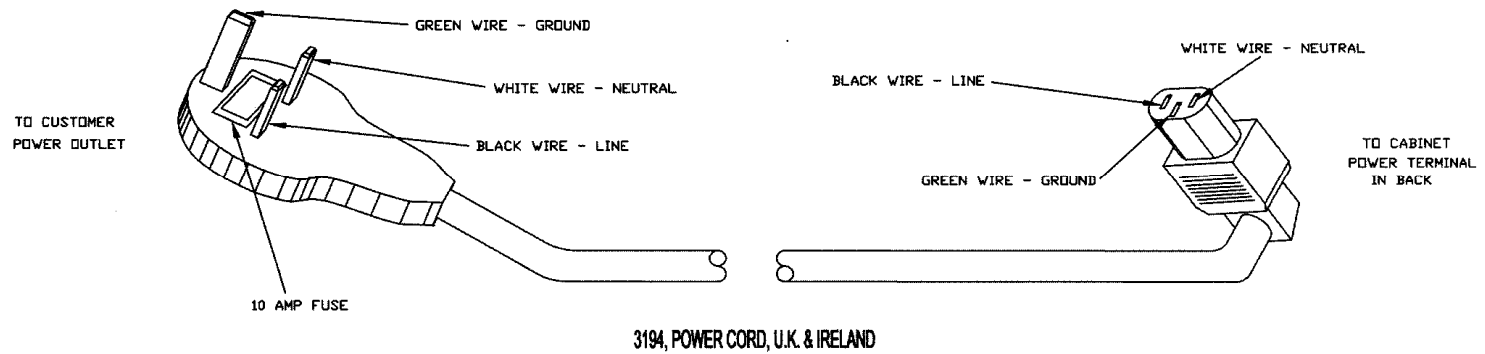
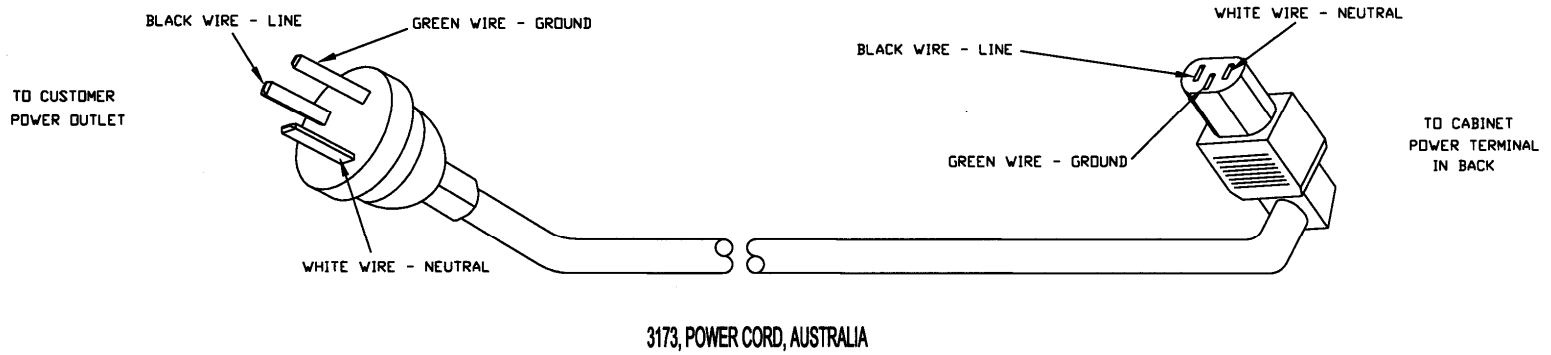
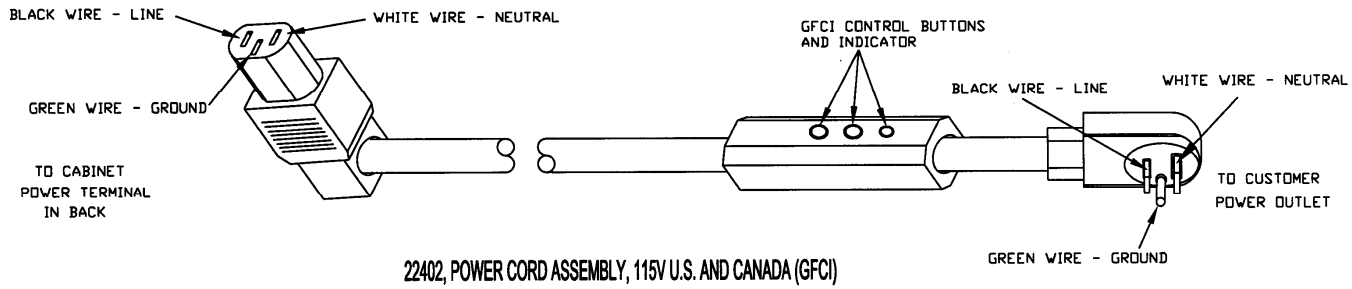
POS DISPLAY ILLUSTRATION

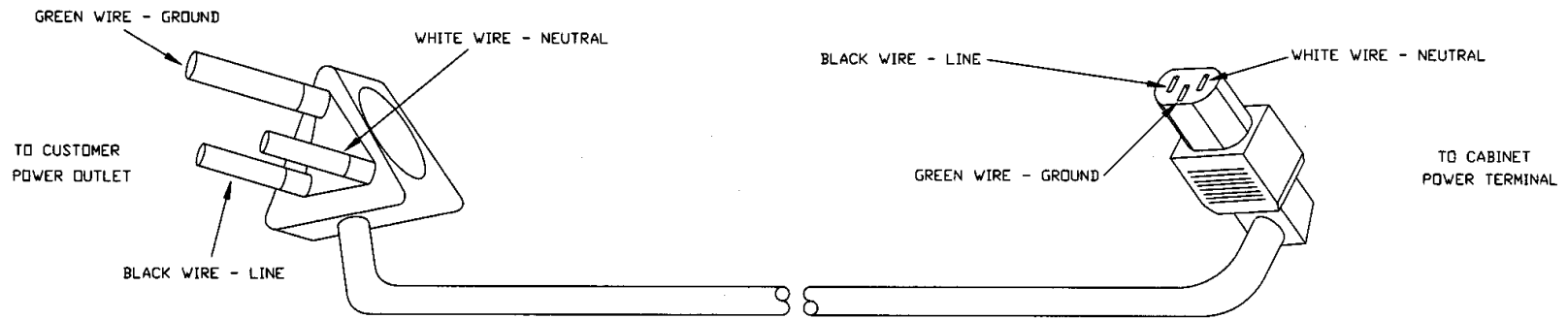


POS DISPLAY PARTS LIST

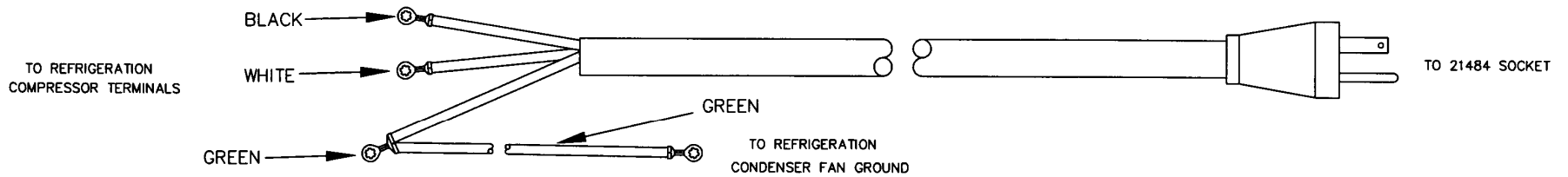
ITEM	PART NO.	PART DESCRIPTION	NOTE
1	24322	POS DISPLAY INSERT	
2	24323	POS DISPLAY DIFFUSER	
3	24329	LED BOARD	
4	24330	POS DISPLAY CARD (AMS)	ENGLISH
	24457	POS DISPLAY CARD (IAMS)	SPANISH
5	24339	LIGHT BOX ASSEMBLY	
6	3029-02	BUSHING	

ELECTRICAL HARNESS ILLUSTRATIONS

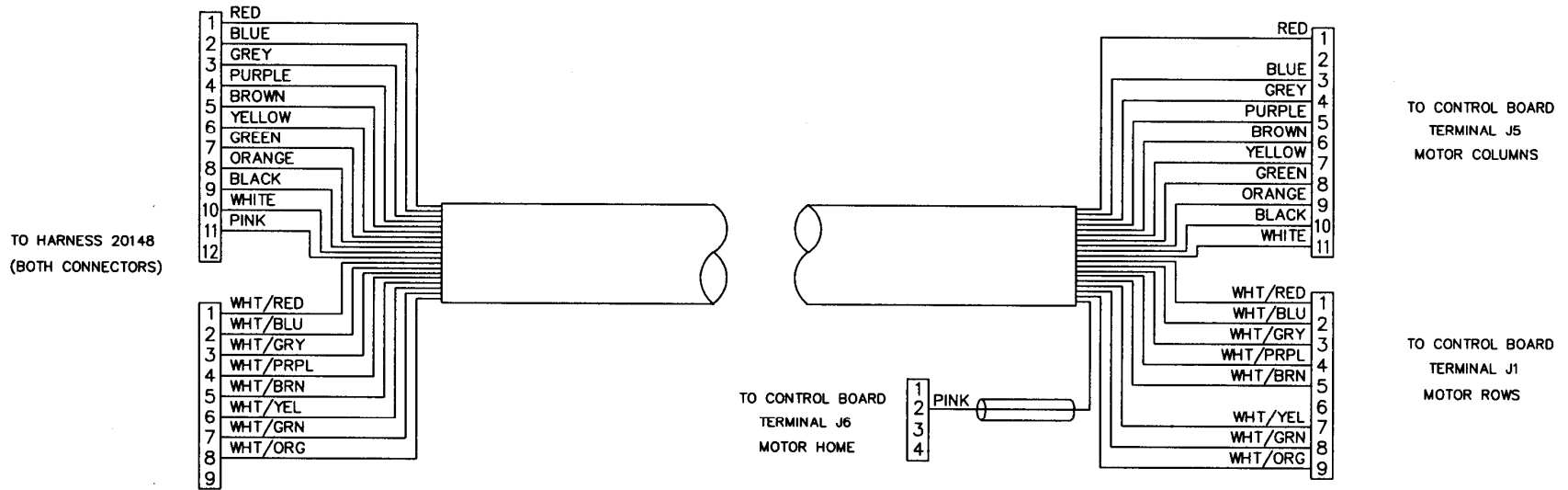




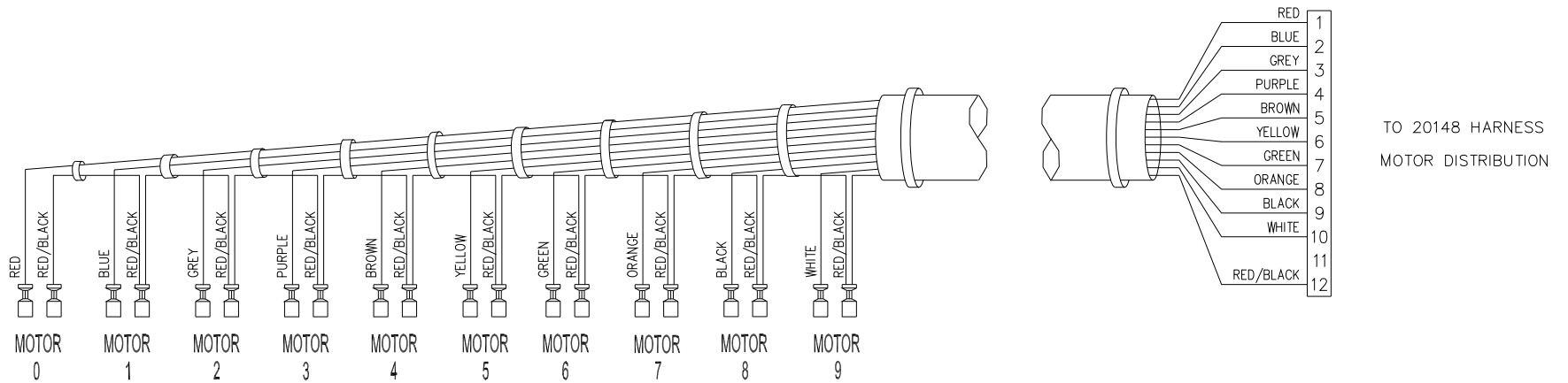
3208 POWER CORD, INDIA AND SOUTH AFRICA



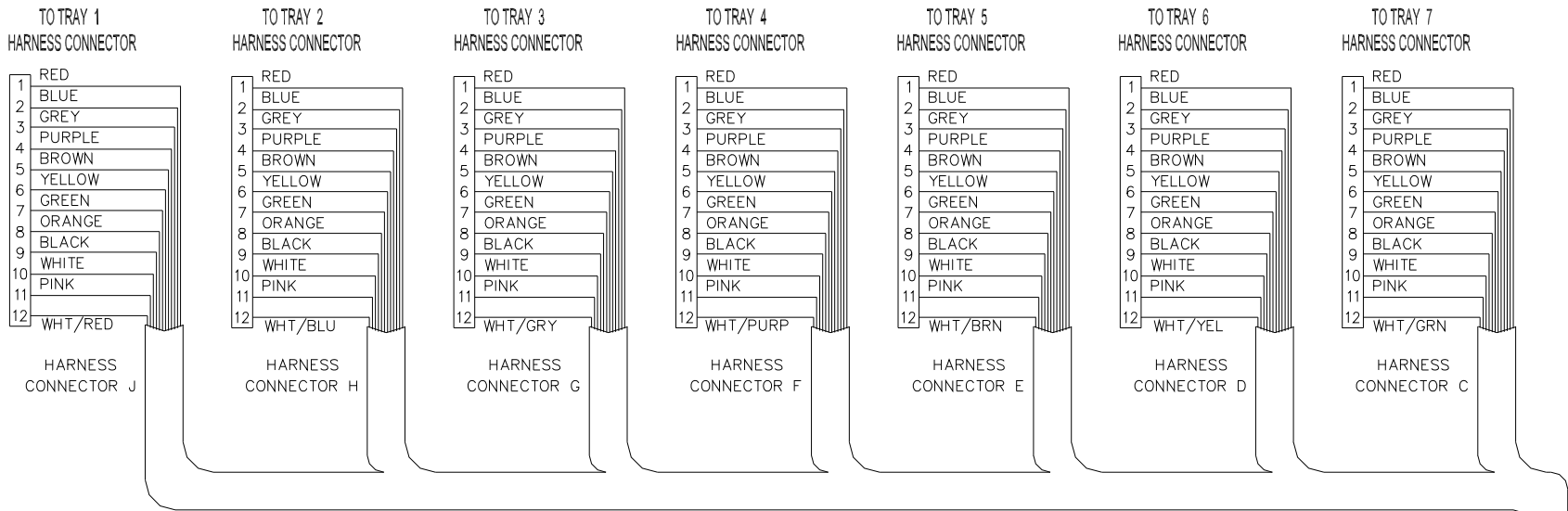
2014, HARNESS, REFRIGERATION



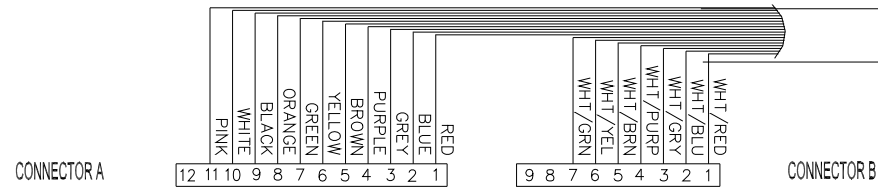
20146, HARNESS, DOOR MOTORS



20147, HARNESS, TRAY, 10 COLUMN

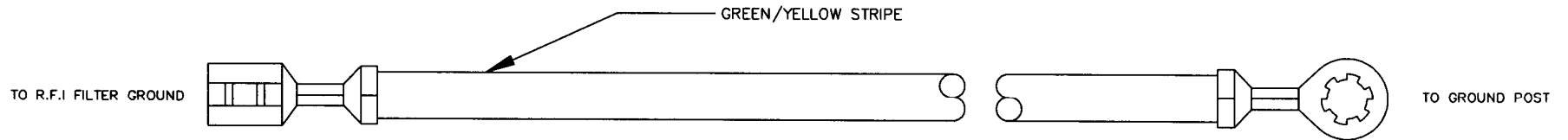


(CONNECTOR A IS JUMPERED TO ALL CONNECTORS TO TRAYS, PINS 1 -11)

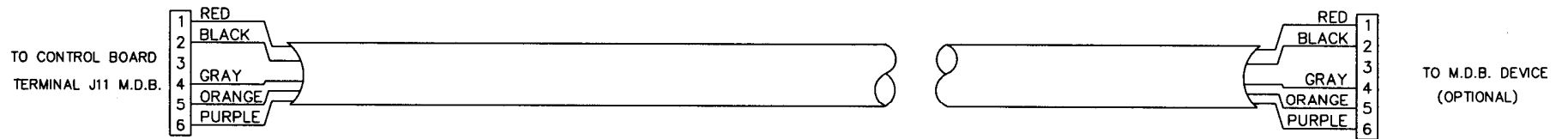


CONNECTOR A AND B TO 20146 HARNESS, DOOR MOTOR

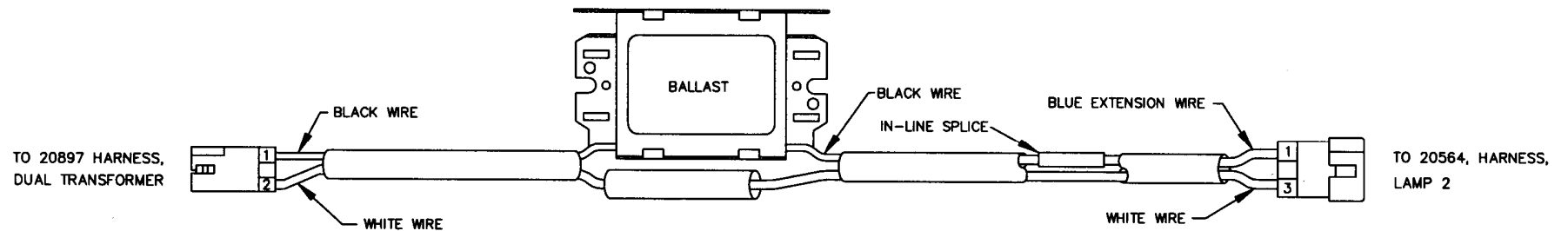
20148, HARNESS, MOTOR DISTRIBUTION



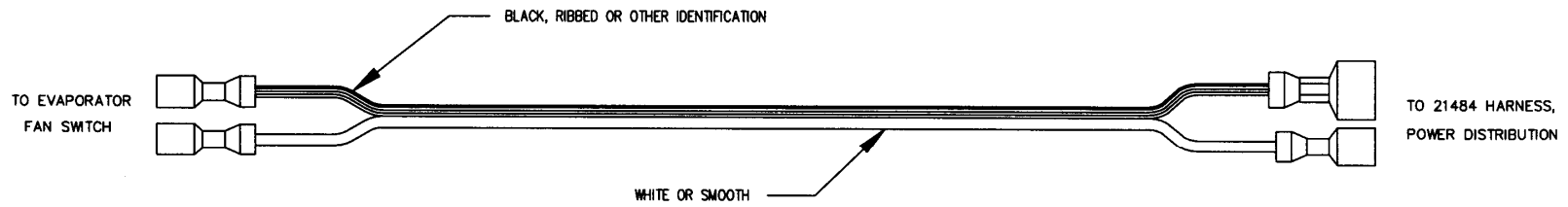
20154, HARNESS, R.F.I. FILTER GROUND



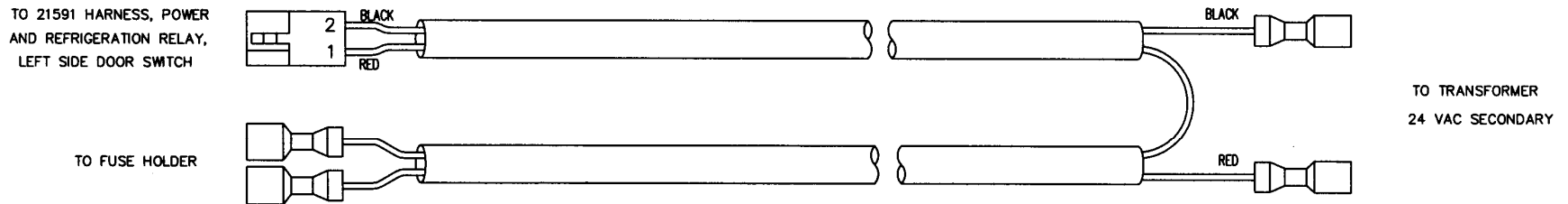
20158, HARNESS, MULTI-DROP BUS



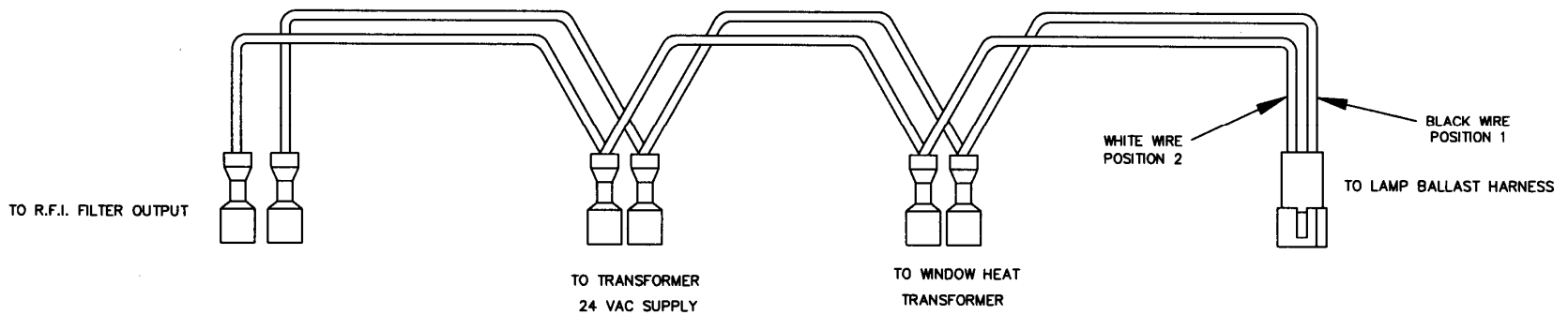
20563, HARNESS, BALLAST ASSEMBLY 2



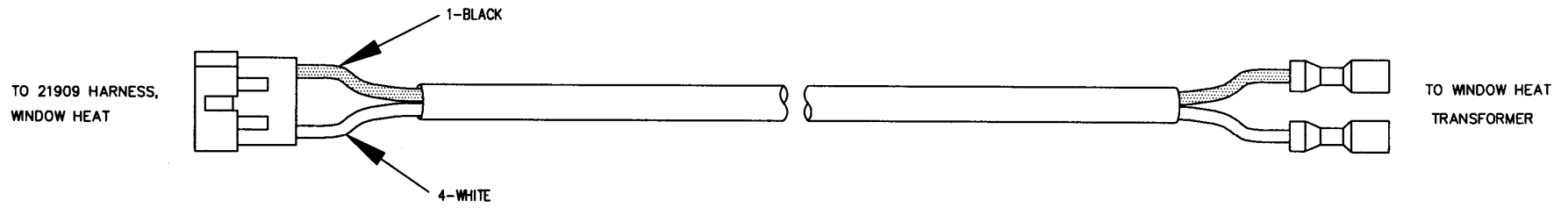
20698, HARNESS, EVAPORATOR FAN SWITCH



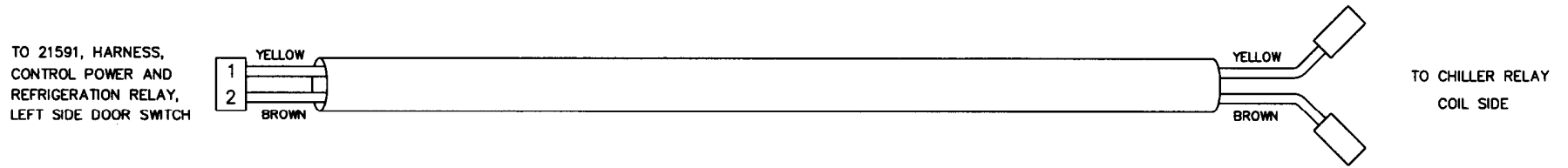
20701, HARNESS, TRANSFORMER AND FUSE



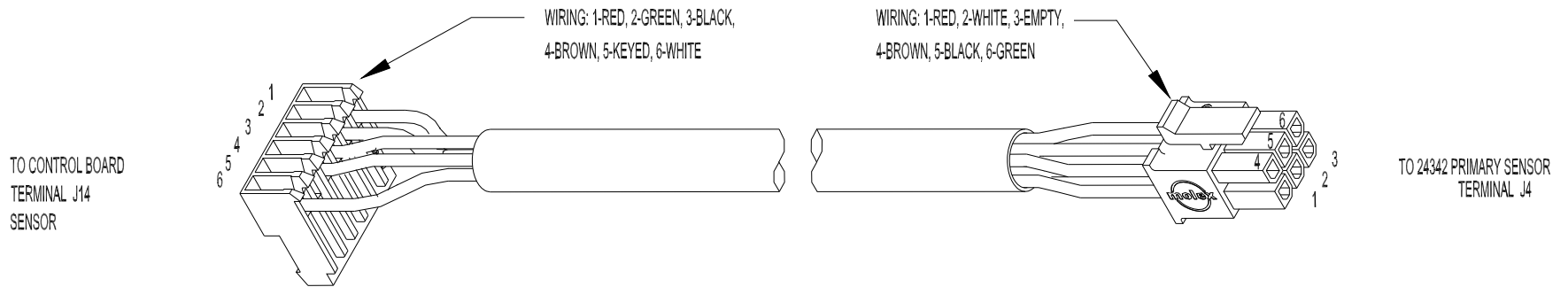
20897, HARNESS, DUAL TRANSFORMER



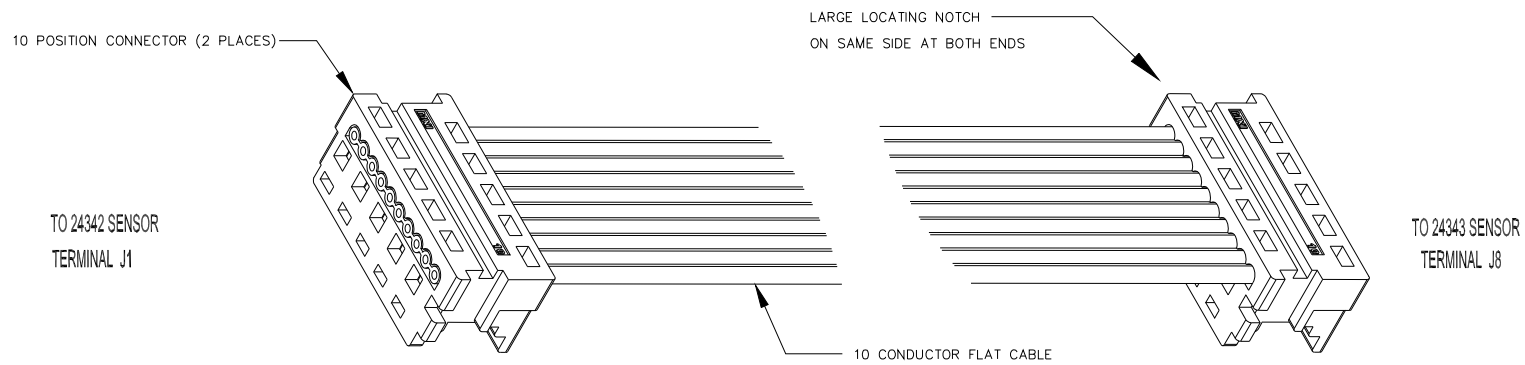
20899, HARNESS, WINDOW HEATER TRANSFORMER



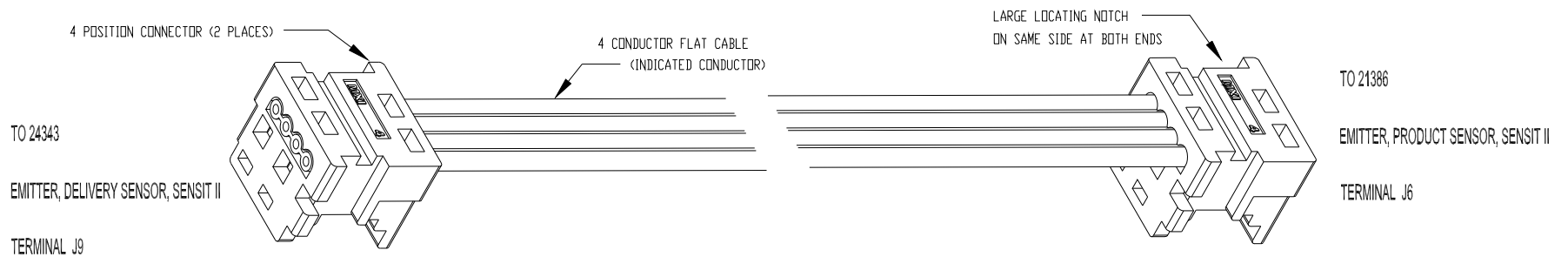
21405, HARNESS, REFRIGERATION RELAY, T9A SERIES



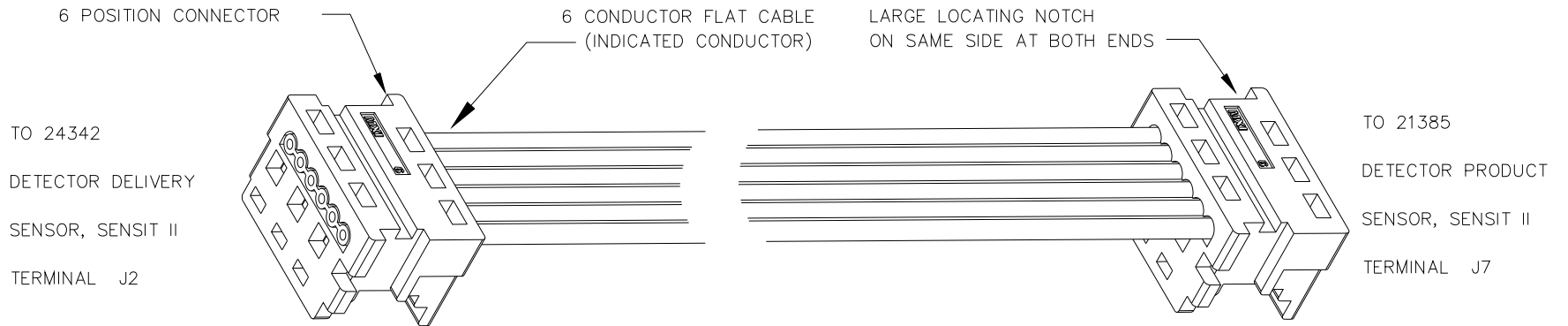
21425 HARNESS, DELIVERY SENSOR DETECTOR/CONTROL, SENSIT II



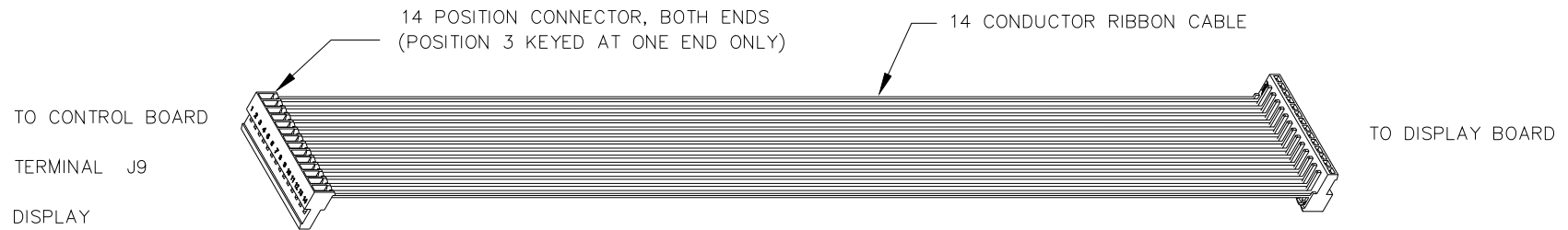
21426 HARNESS, DELIVERY SENSOR DETECTOR/EMITTER, SENSIT II



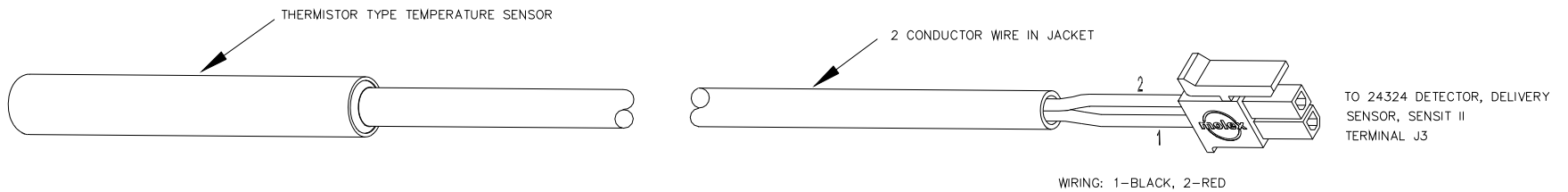
21427 HARNESS, PRODUCT SENSOR EMITTER, SENSIT II



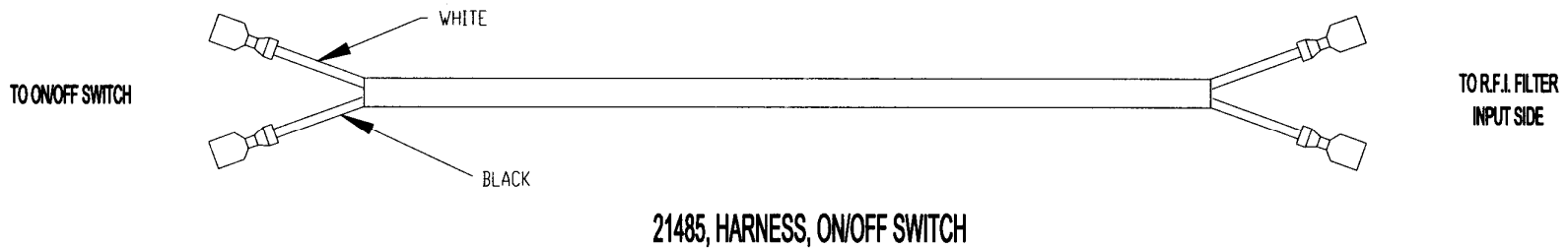
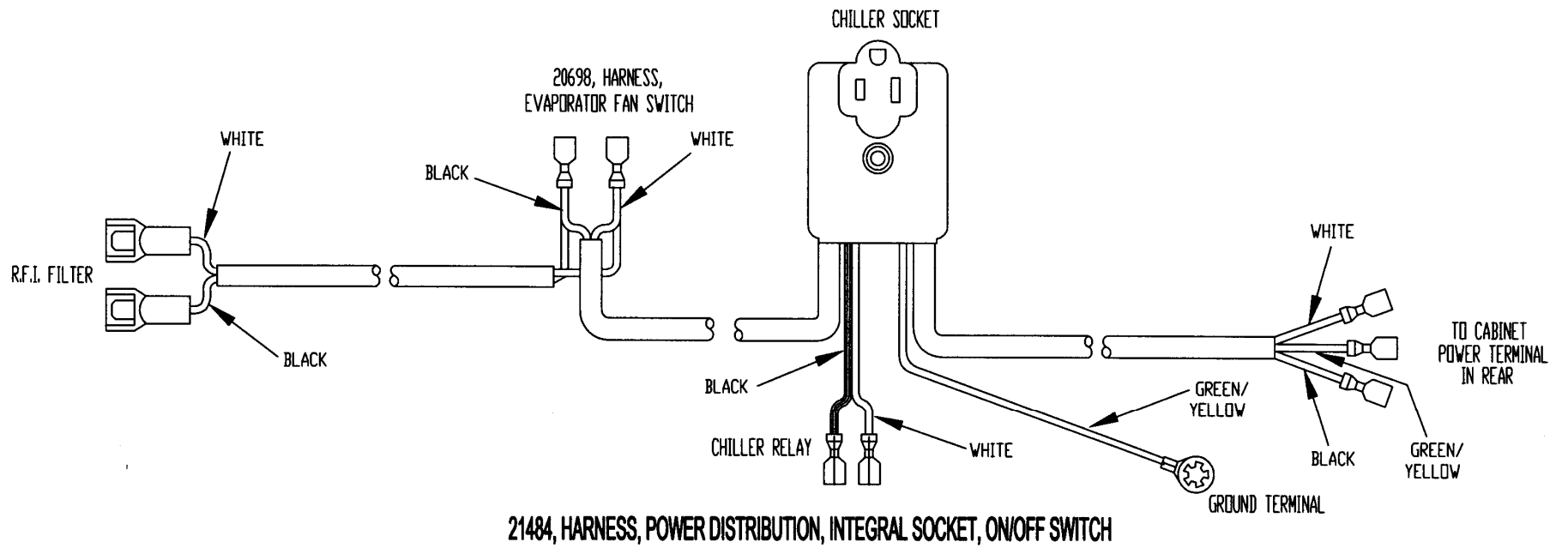
21428, HARNESS, PRODUCT SENSOR DETECTOR, SENSIT II (OPTIONAL)

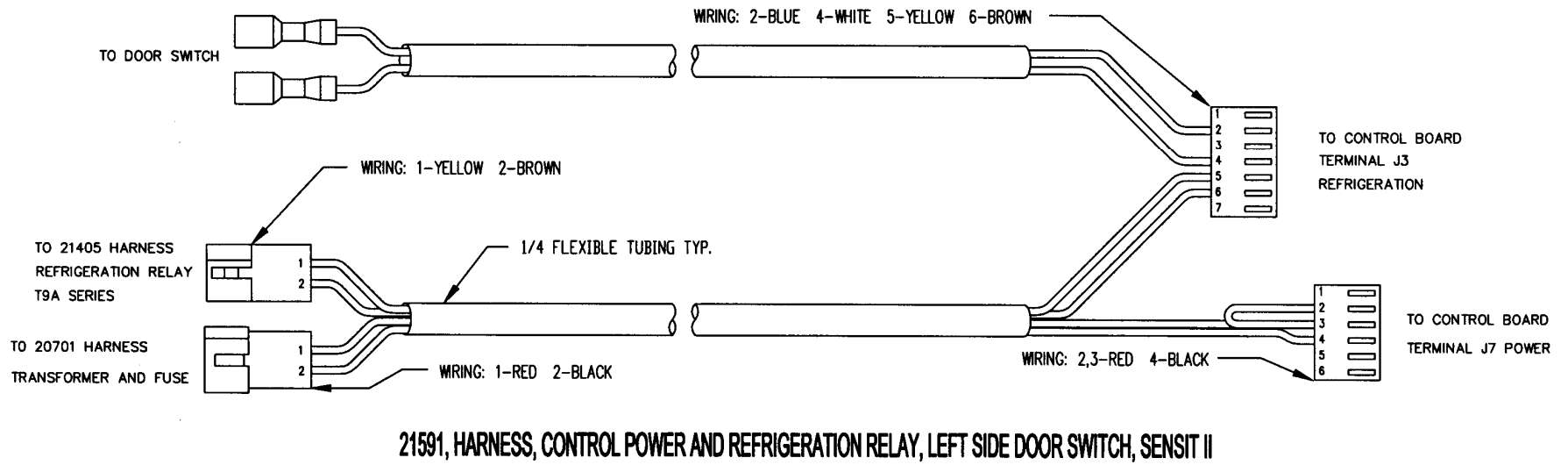
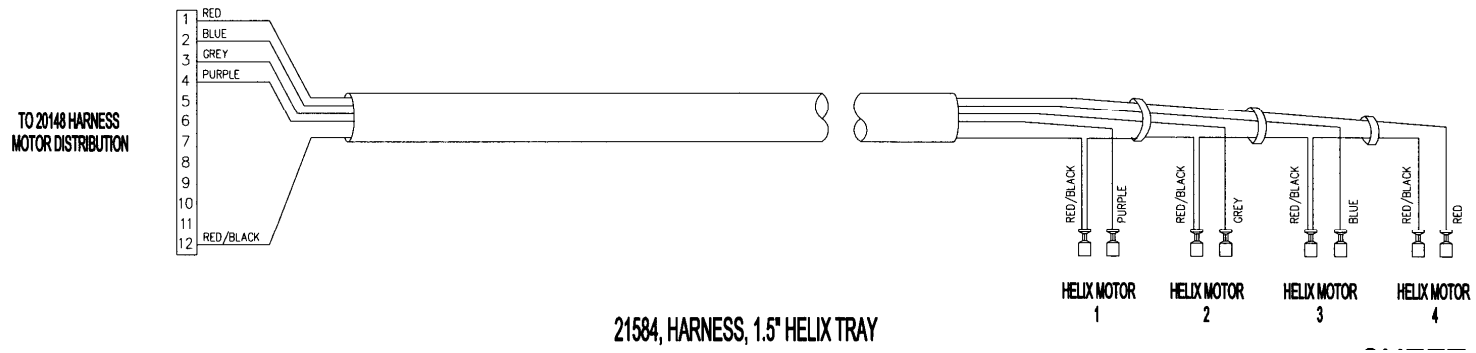


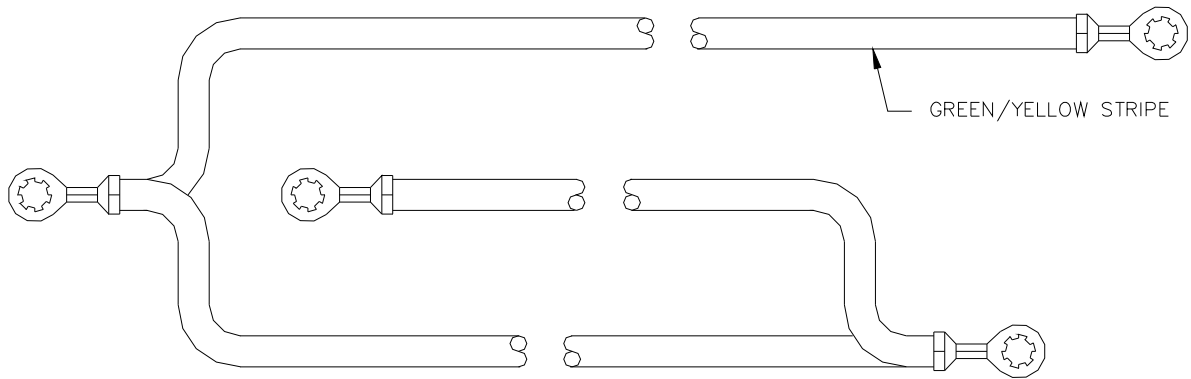
24015 HARNESS, DISPLAY



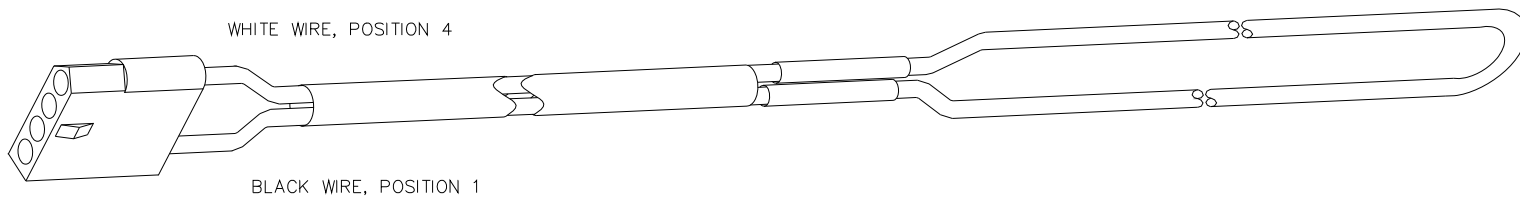
21468 TEMPERATURE SENSOR, SENSIT II



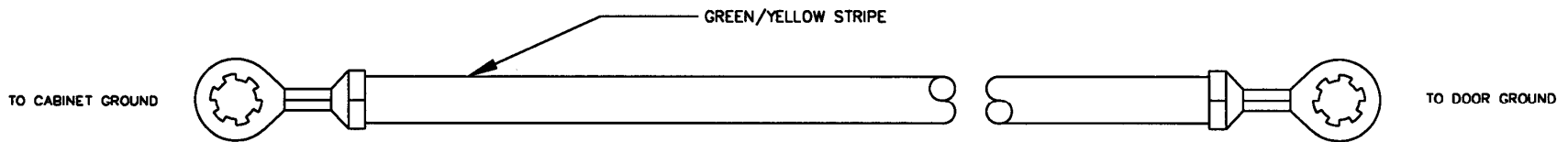




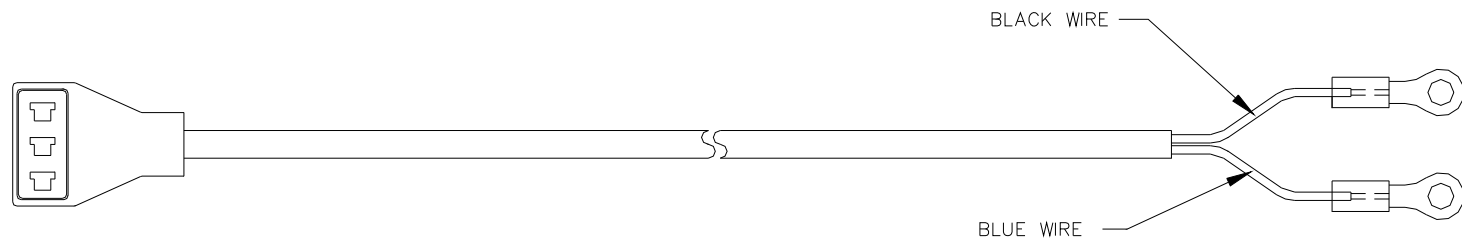
21978 HARNESS, GROUND, EMITTER/DETECTOR



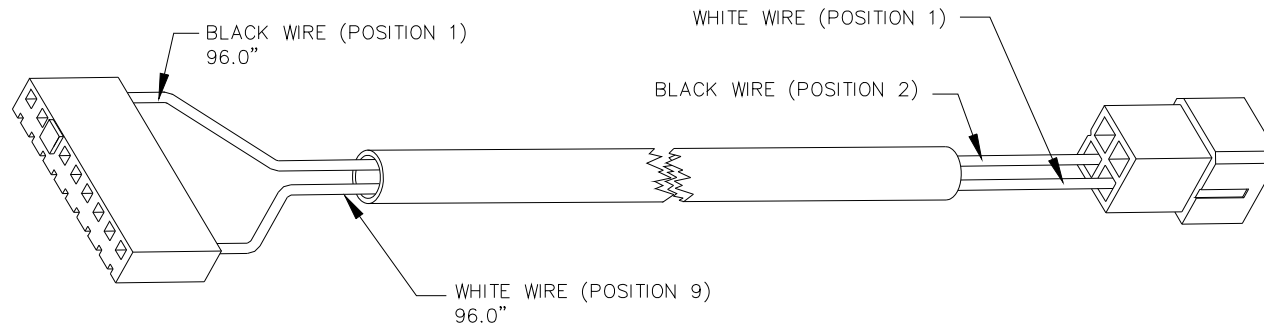
20896 HARNESS, WINDOW HEAT, LOW TEMP



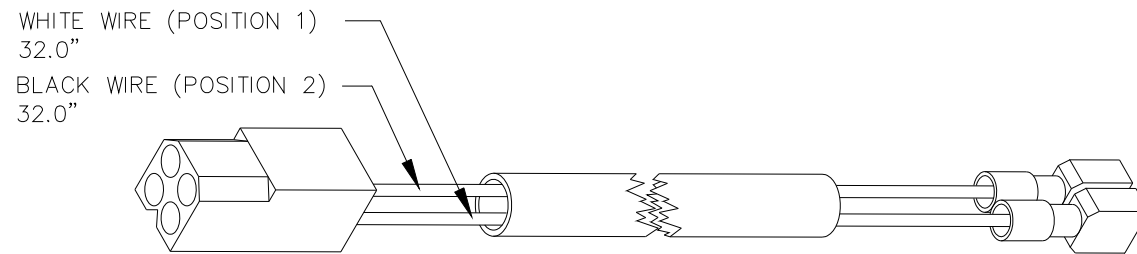
20156-01, HARNESS, GROUND



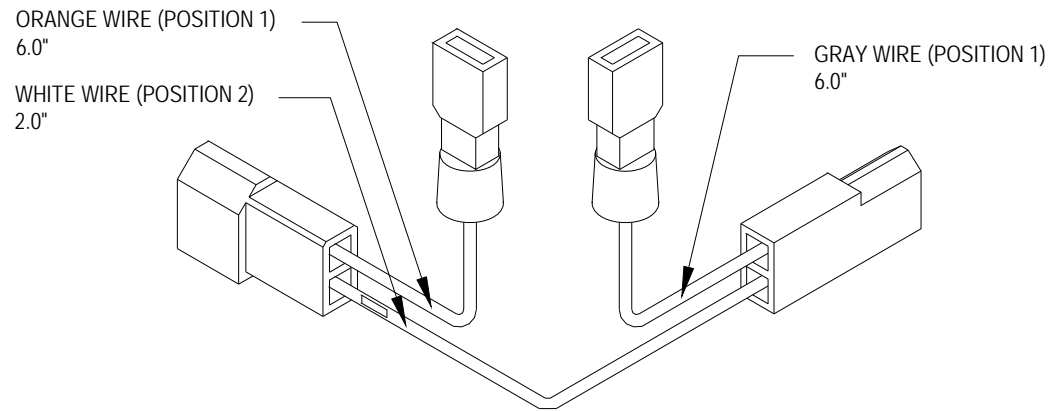
22470 HARNESS, CONDENSER FAN, H.E.



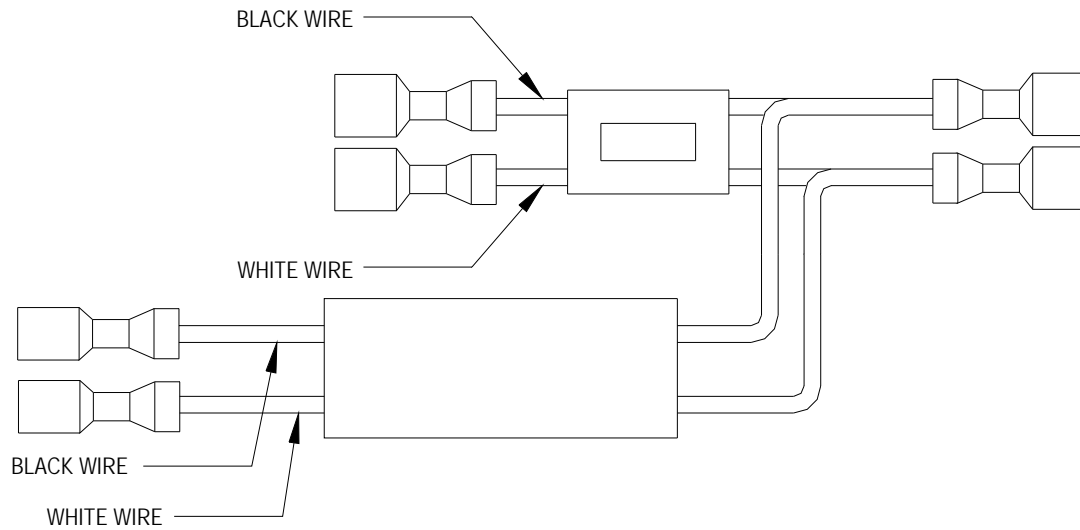
22424, HARNESS, AUX OUTPUTS AND LAMP RELAY (96")



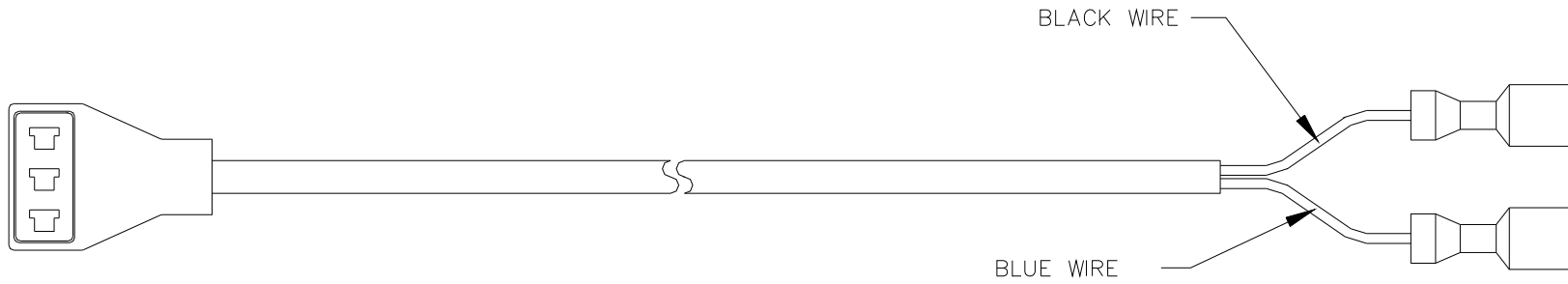
22425, HARNESS, LAMP RELAY (32")



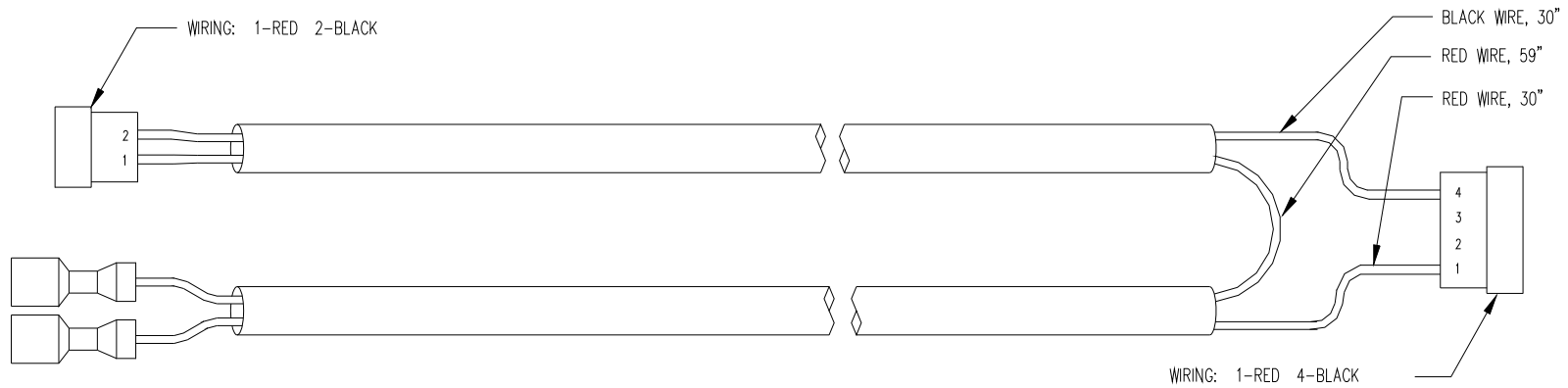
22426, HARNESS, BALLAST AND LAMP RELAY



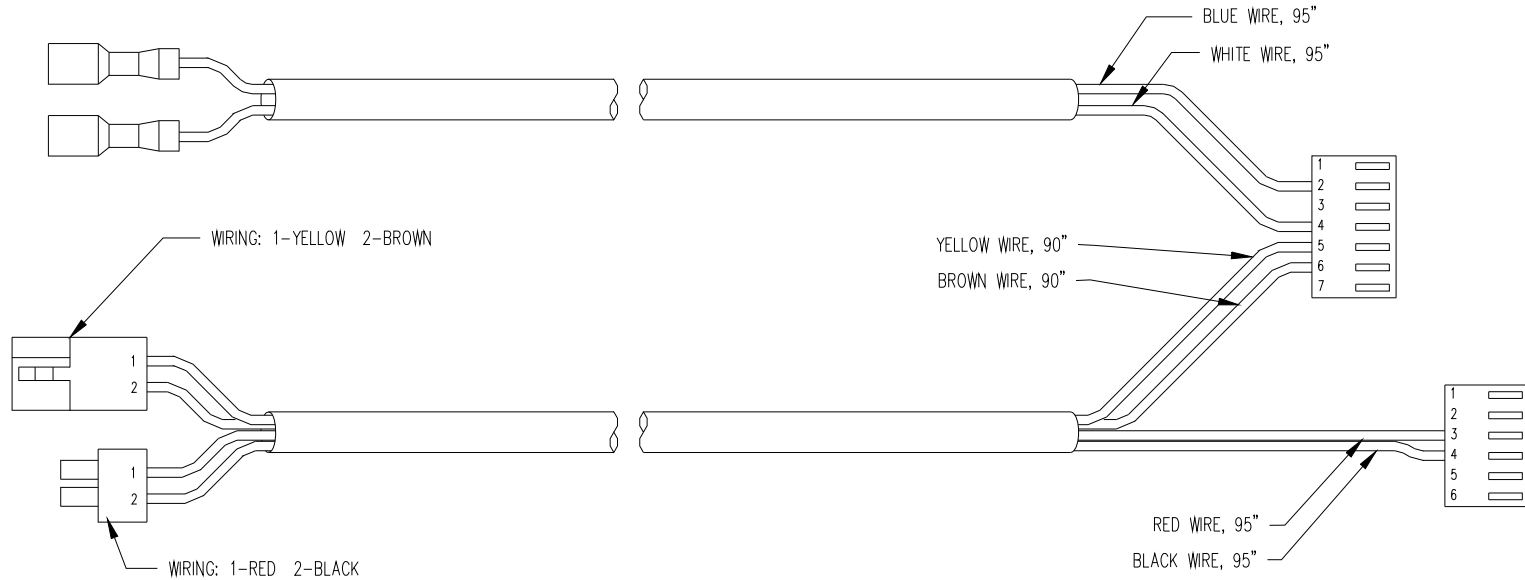
23625, HARNESS, DUAL TRANSFORMER, NO BALLAST



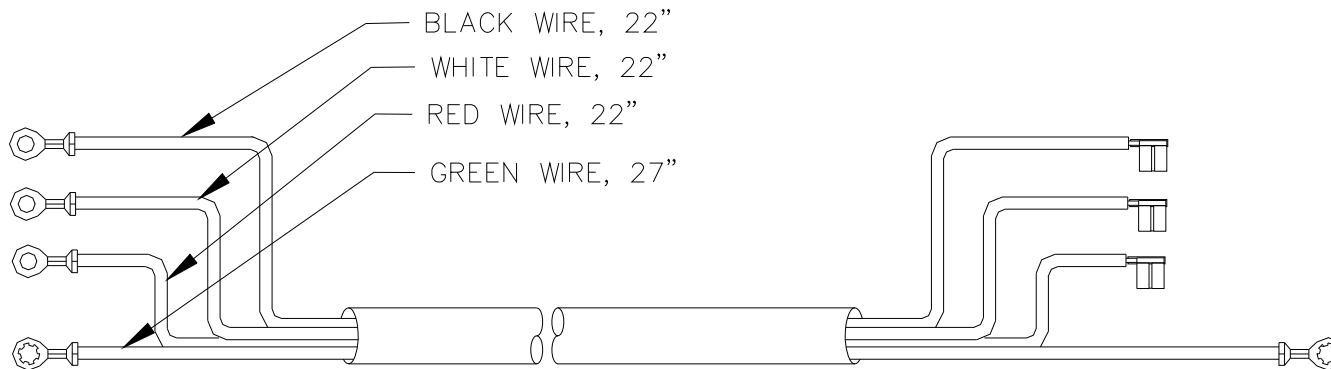
22469, HARNESS, EVAPORATOR FAN, H.E.



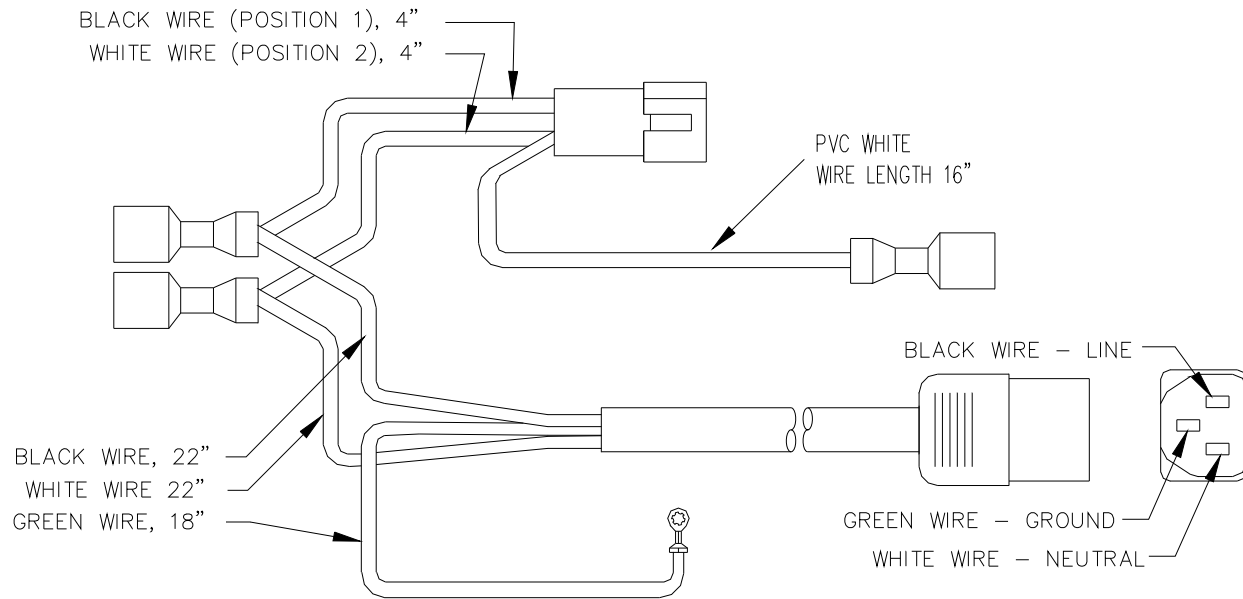
22455, HARNESS, POWER SUPPLY AND FUSE, HE



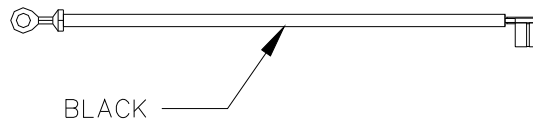
22454, HARNESS, CONTROL BOARD, HE



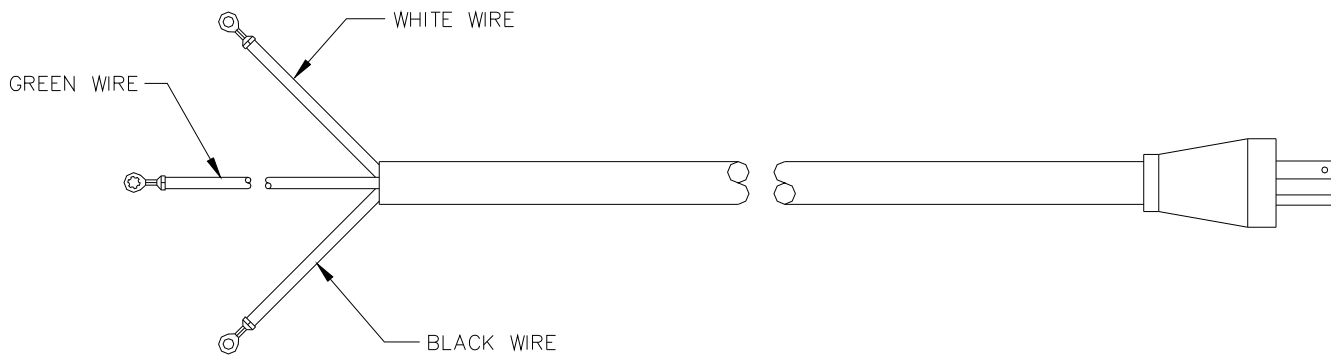
22461, HARNESS, H.E. COMPRESSOR



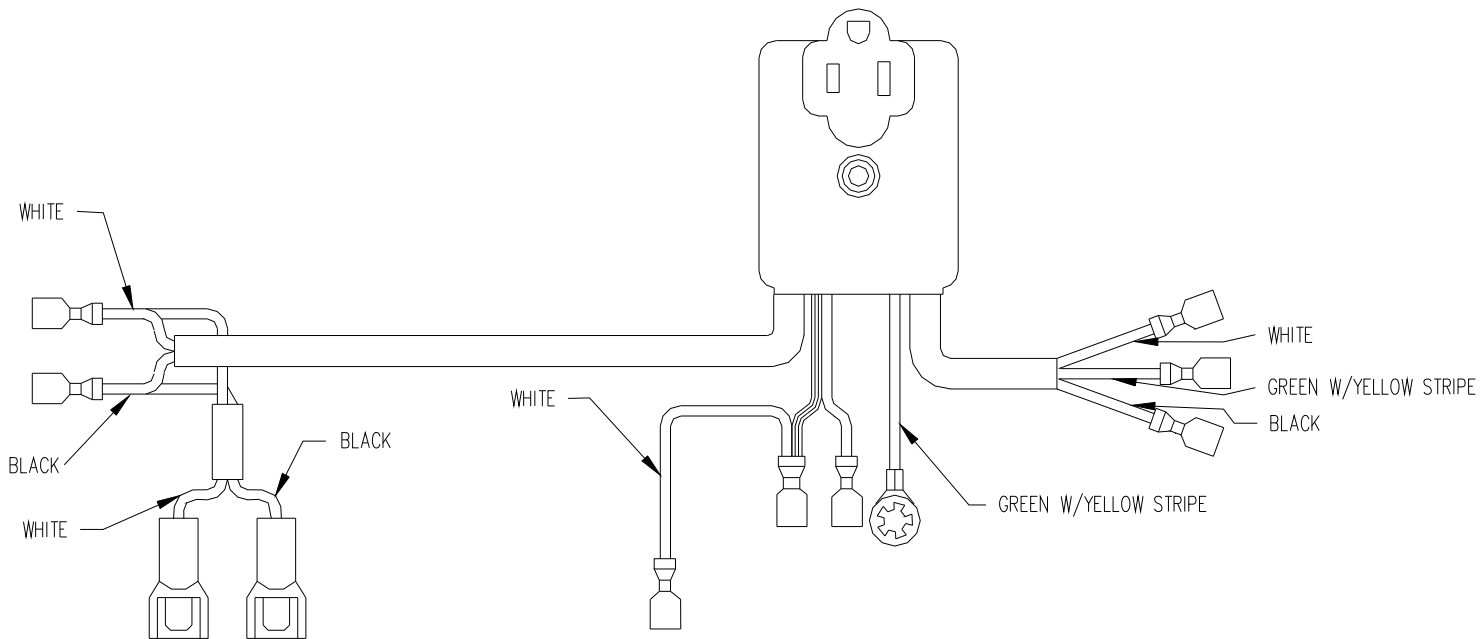
22457, HARNESS, SWITCHING POWER SUPPLY, H.E.



22462, HARNESS, RELAY - CAPACITOR



22653, HARNESS, REFRIGERATION, H.E.

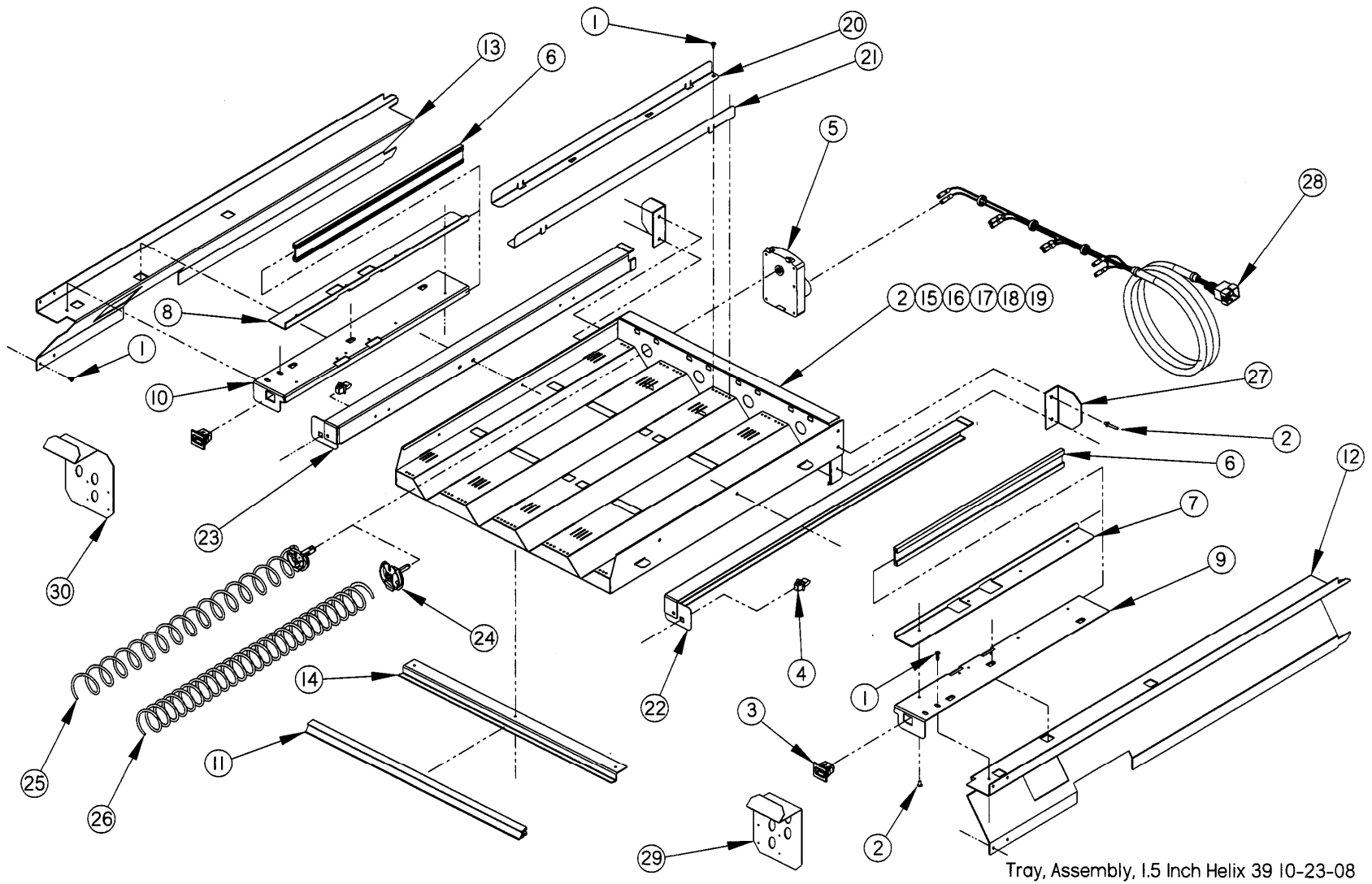


22815, HARNESS, POWER DISTRIBUTION, H.E.

ELECTRICAL HARNESS PARTS LIST		
PART NO.	PART DESCRIPTION	NOTES
22402	POWER CORD ASSEMBLY, 115V U.S. & CANADA	
3173	POWER CORD, AUSTRALIA	
3194	POWER CORD, U.K. & IRELAND	
3208	POWER CORD, INDIA & SOUTH AFRICA	
20144	REFRIGERATION HARNESS	
20146	DOOR MOTORS HARNESS	
20147	10 COLUMN TRAY HARNESS	
20148	MOTOR DISTRIBUTION HARNESS	
20154	RFI FILTER GROUND	
20158	MULT-DROP BUSS HARNESS	
20563	BALLAST ASSEMBLY	OPTIONAL LIGHTING ITEM
20698	EVAPORATOR FAN HARNESS	
20701	TRANSFORMER AND FUSE HARNESS	
20897	DUAL TRANSFORMER HARNESS	
20899	WINDOW HEATER TRANSFORMER HARNESS	
21405	REFRIGERATION RELAY HARNESS	
21425	DELIVERY SENSOR HARNESS	
21426	DELIVERY SENSOR DETECTOR/EMITTER HARNESS	
21427	PRODUCT SENSOR EMITTER HARNESS	
21428	PRODUCT SENSOR DETECTOR	OPTIONAL ITEM
24015	DISPLAY HARNESS	
21468	TEMPERATURE SENSOR	
21484	POWER DISTRIBUTION HARNESS	
21485	ON/OFF SWITCH HARNESS	
21584	1.5"HELIX TRAY HARNESS	
21591	CONTROL POWER AND REFRIGERATION HARNESS	
20896	WINDOW HEAT HARNESS	
20156-01	GROUND HARNESS	
22470	CONDENSER FAN, HE HARNESS	
22424	AUX OUTPUTS AND LAMP RELAY HARNESS	
22425	LAMP RELAY HARNESS	
22426	BALLAST AND LAMP RELAY HARNESS	
23625	DUAL TRANSFORMER, NO BALLAST HARNESS	
22469	EVAPORATOR FAN, HE HARNESS	

22455	POWER SUPPLY AND FUSE, HE HARNESS	
22454	CONTROL BOARD, HE HARNESS	
22461	HE, COMPRESSOR HARNESS	
22457	SWITCHING POWER SUPPLY, HE HARNESS	
22462	RELAY, CAPACITOR HARNESS	
22653	REFRIGERATION, HE HARNESS	
22815	POWER DISTRIBUTION, HE HARNESS	

1.5" HELIX TRAY ILLUSTRATION

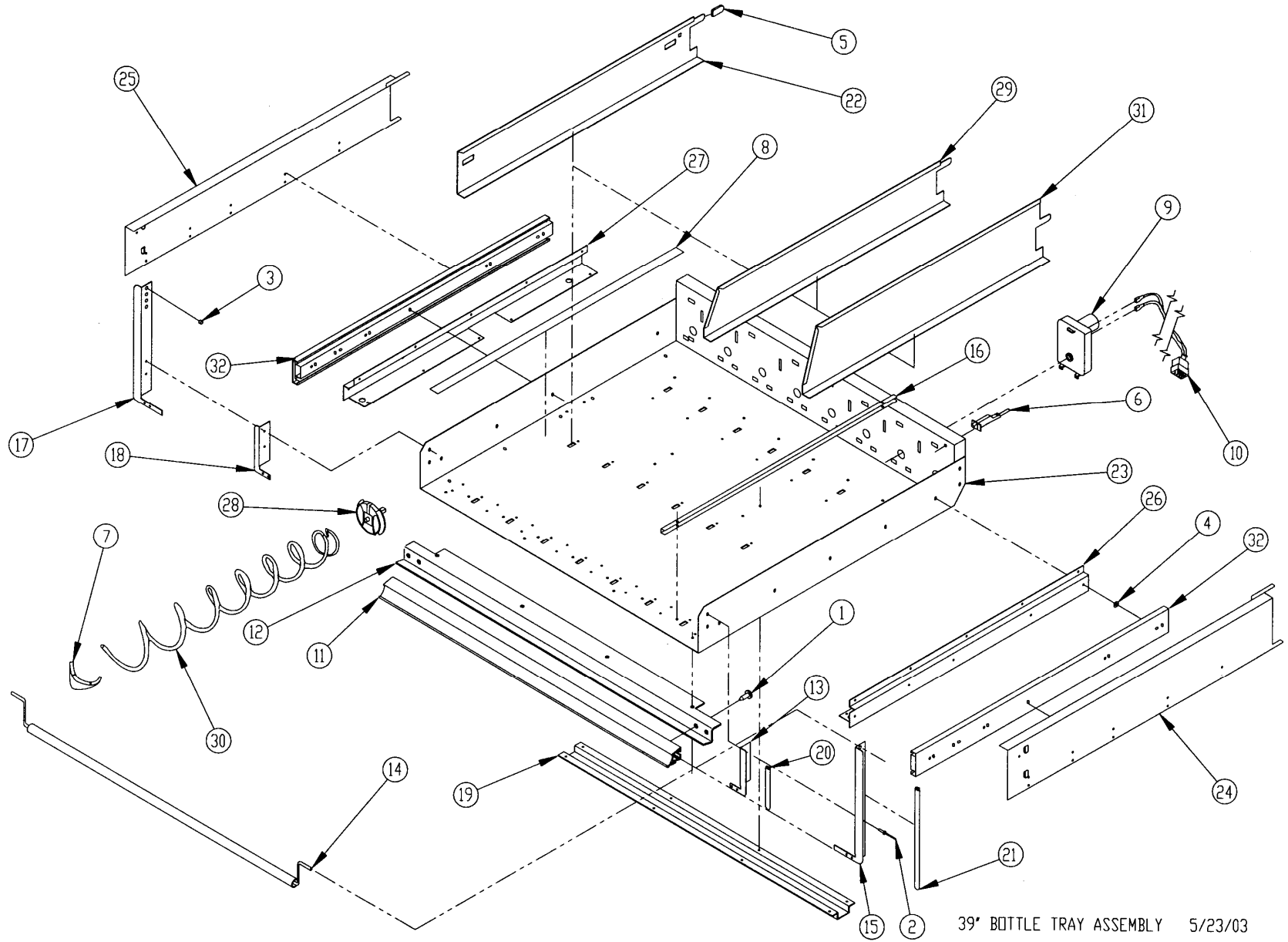


1.5" HELIX TRAY ASSEMBLY PARTS LIST

ITEM NO	PART NO.	PART NAME	QTY	NOTES
1	3000	Screw, TEK 8-18	18	
2	3009-02	Rivet, Pop, Steel, 1/8	34	
3	3246	Latch, Nylon, Gum and Mint	2	
4	3247	Strike, Nylon, Gum and Mint	2	
5	20086	Motor, Single Helix W/O Switch	4	
6	20236	Extrusion, Gum and Mint Rail	2	
7	20237	Extrusion Mount, Upper (Gum and Mint)(Right Side)	1	
8	20237-01	Extrusion Mount, Upper (Gum and Mint)(Left Side)	1	
9	20238	Extrusion Mount, Lower (Gum and Mint)(Right Side)	1	
10	20238-01	Extrusion Mount, Lower (Gum and Mint)(Left Side)	1	
11	20465-04	Extrusion, Price Marker, Reduced Height	1	
12	20973	Rail, Gum and Mint, Reduced Depth (39")(Right Side)	1	Rails To Fit Tray To 39" Cabinet
13	20973-01	Rail, Gum and Mint, Reduced Depth (39")(Left Side)	1	
14	21196	Doubler, Tray 1.5" Helix Tray	1	
15	21197	Tray Body, 1.5" Helix Tray	1	Parts Are Factory Assembled As A Unit
16	21199	Tray Back, 1.5" Helix Tray	1	
17	21200	Tray Inner Side, 1.5" Helix Tray	2	
18	21201	Tray Inner Section, 1.5" Helix Tray	2	
19	21202	Tray Inner Mid Section, 1.5" Helix Tray	1	
20	21203	Divider, Tray, 1.5" Helix Tray, RH	4	
21	21203-01	Divider, Tray, 1.5" Helix Tray, LH	4	
22	21204	Tray Slide Channel, 1.5" Helix Tray, RH	1	
23	21204-01	Tray Slide Channel, 1.5" Helix Tray, LH	1	
24	21206	Helix Adapter, 1.5" Helix Tray	4	
25	21207-15	Helix, 1.5" Tray, Counterclockwise, Black	2	Tray is Equipped With Two Of Each
26	21207-25	Helix, 1.5" Tray, Counterclockwise, Black	2	
27	21523	Bracket, Stop, 1.5" Helix Tray	2	
28	21584	Harness, 1.5" Helix Tray	1	
29	22387	Deflector Plate, 1.5" Helix Tray, 1-1/2 CF. Hopper (39")	1	RH, Mount On Hopper For 1.5 Tray Only
30	22387-01	Deflector Plate, 1.5" Helix Tray, 1-1/2 CF. Hopper (39")	1	LH, Mount On Hopper For 1.5 Tray Only

General Note: The 1.5 Helix Tray has replaced the 20668 Gum and Mint Tray.

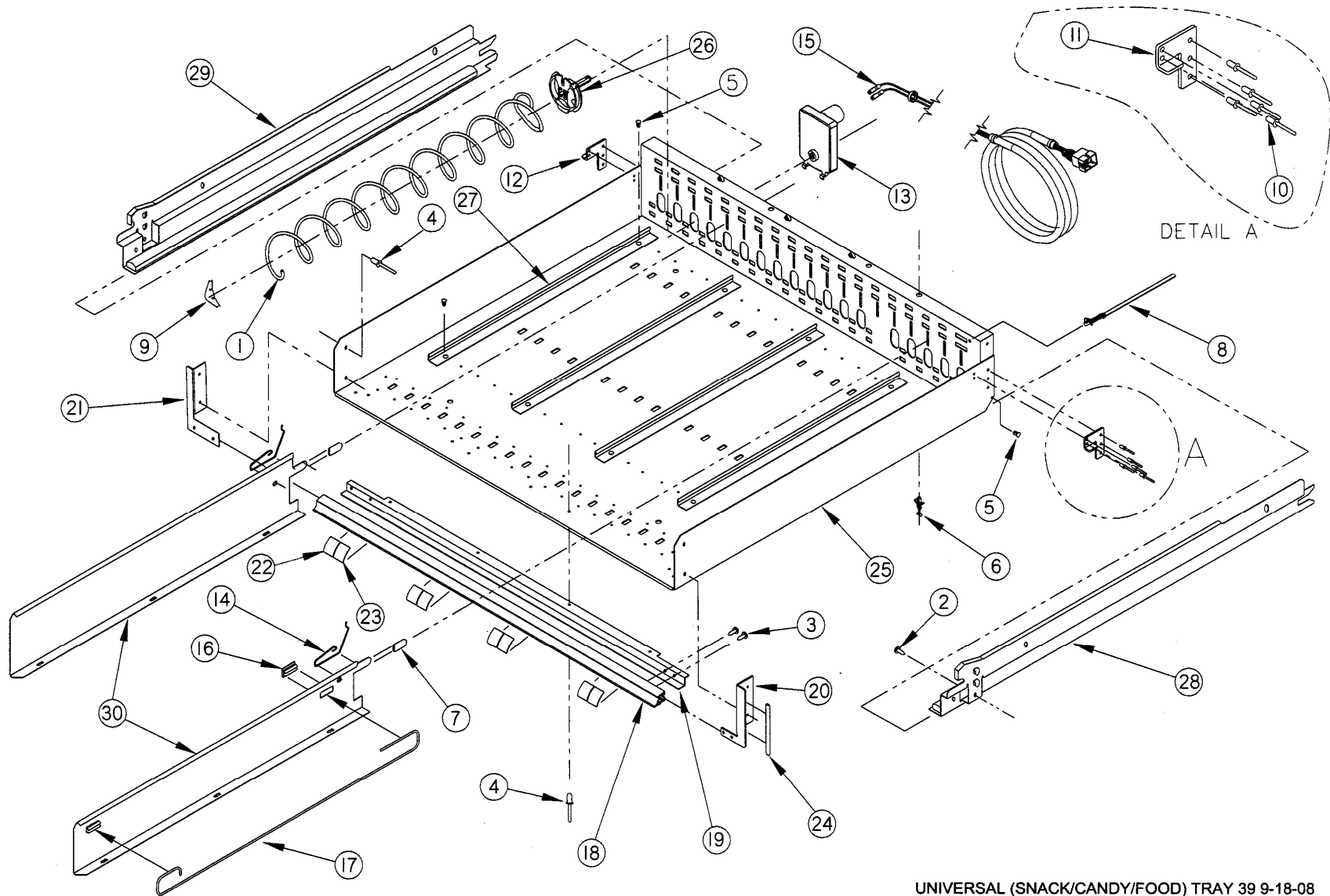
BOTTLE TRAY ILLUSTRATION



39' BOTTLE TRAY ASSEMBLY 5/23/03

BOTTLE TRAY PARTS LIST			
ITEM	PART NO	PART DESCRIPTION	NOTE
1	3001-03	Screw, Sheet Metal, Type B, 8-18	
2	3009-02	Rivet, Pop, Steel, 1/8	
3	3015	Bearing, Nyliner, Snap-In	Use On 20691 And 20724 for Bottle Tipper
4	3017-05	Washer, Flat Steel	
5	3021	Protective Cap, Vinyl	Obsolete Part
6	3042-01	Wire Tie, Panel Mount	
7	3111	Helix Ejector, Small Helix	
8	3189-01	Tape, UHMW Polyethylene, 3/4" X .005"	
9	20086	Motor, Single Helix W/O Switch	
10	20147	Harness, Tray, 8 Column	
11	20465-03	Extrusion, Price Marker, Ver. 2	
12	20644	Tray Doubler, Bottle (39')	
13	20672	Tray Corner, Bottle, Right	Use With 20690 Without Bottle Tipper
14	20690	Assembly, Bottle Tipper Bar	
15	20691	Tray Corner, Bottle Tipper Bar, Right	Use With 20690 For Bottle Tipper
16	20692	Device, Bottle Alignment	
17	20724	Tray Corner, Bottle Tipper Bar, Left	Use With 20690 For Bottle Tipper
18	20725	Tray Corner, Bottle, Left	Use With 20690 Without Bottle Tipper
19	20775	Tray Reinforcement, Bottle (39') Ver. 2	
20	20796-01	Edge Guard, Tray Corner (Only RH)	Use On 20672 Without Bottle Tipper
21	20796-02	Edge Guard, Tray Corner (Only RH)	Use On 20691 For Bottle Tipper
22	20956	Tray Divider, Reduced Depth (Square Front)	
23	20960	Tray Body, Bottle, Reduced Depth (39')	
24	20980	Rail, Bottle Tray, Reduced Depth (RH)	
25	20980-01	Rail, Bottle Tray, Reduced Depth (LH)	
26	20962	Bracket, Bottle Tray Rail, Reduced Depth (RH)	
27	20962-01	Bracket, Bottle Tray Rail, Reduced Depth (LH)	
28	20966	Helix Adapter, Without Hub	
29	21276	Tray Divider, Reduced Depth, Tapered Front	
30	21336	Helix, 3' Counter-Clockwise, 3.5' Opening, Black	See Helix Description Section For Options.
31	21374	Tray Divider, Reduced Depth, Tapered Front, High	4.9" High (Optional Part)
32	21475-02	Rail Slide, Full Extension, 24"	1 Pair

MODEL 39 (SNACK/CANDY/FOOD) TRAY ILLUSTRATION

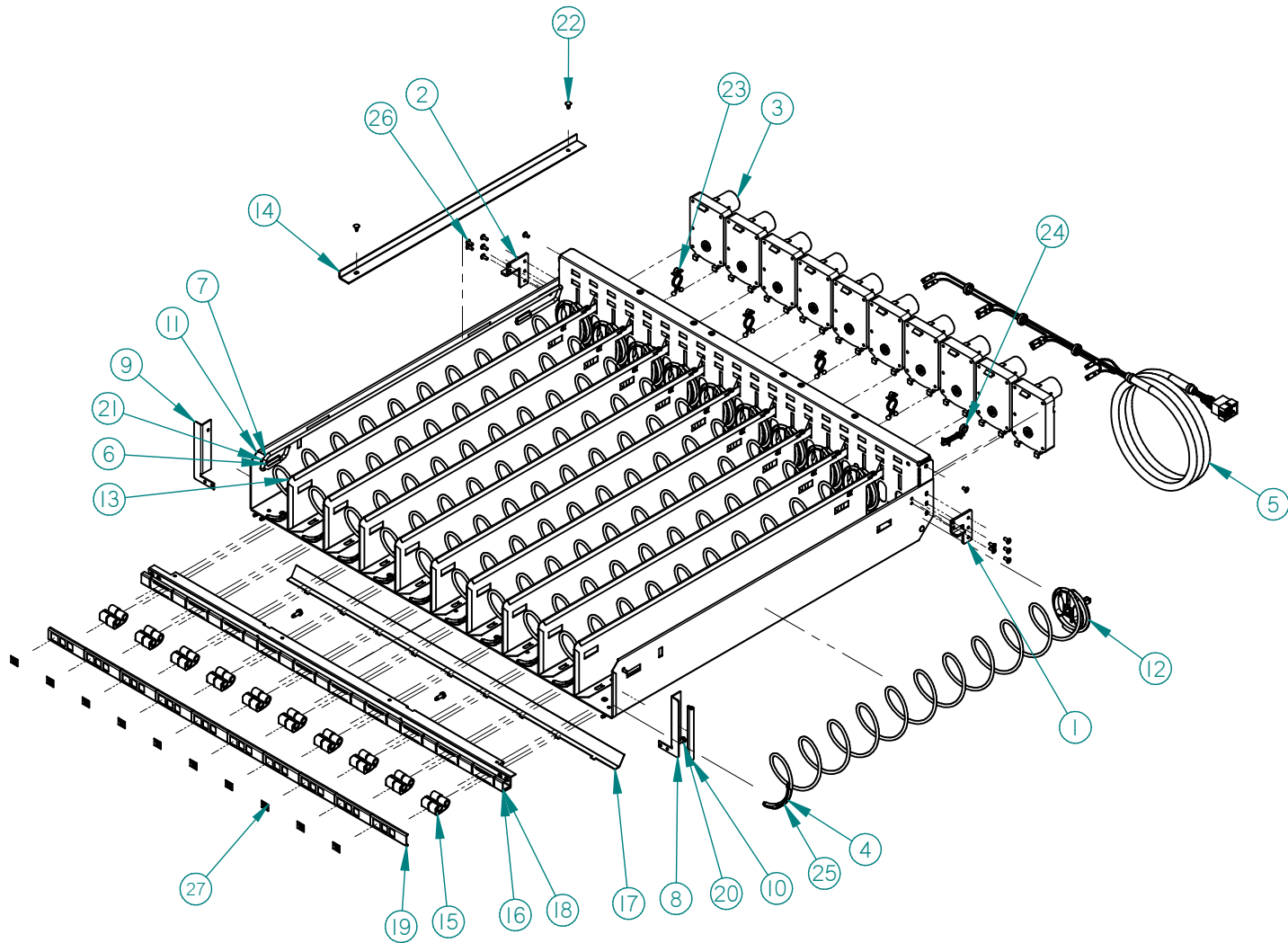


UNIVERSAL (SNACK/CANDY/FOOD) TRAY 39 9-18-08

MODEL 39 (SNACK/CANDY/FOOD) TRAY PARTS LIST

ITEM NO	PART NO.	PART DESCRIPTION	NOTE
1	-----	Helix	1 Per Column - See Helix Section.
2	3000	Screw, Sheet Metal, 8-18	Safety Screws for Rails
3	3001-03	Screw, Sheet Metal, Type B, #8-18 (3/8" Long)	
4	3009-02	Rivet, Pop, Steel, 1/8 (1/8" Grip)	
5	3019	Canoe Clip	Plus 2 Per Helix Alignment Device
6	3020	Wire Tie, Standoff	
7	3021	Divider Cap	Obsolete Part
8	3042-01	Wire Tie, Panel Mount	
9	3111	Helix Ejector	
10	3295-03	Rivet, Steel, 1/8", Plated	Use for Tab Stop
11	20073	Tray Stop (Rh)	
12	20073-01	Tray Stop (Lh)	
13	23007	Motor, With Home Circuit, S3	
	24080	Motor, With Home Circuit, Reversible	
14	20133	Tray Divider Spring	Per Divider
15	20147	Harness, Tray, 10 Column	
16	20220	Extrusion, Candy Pusher	Per Divider With Cut-outs
17	20221	Bar, Candy Pusher	Per Divider With Cut-outs
18	20465-02	Extrusion, Price Marker, Reduced Height	
19	20544	Tray Doubler, VER 2 (39")	
20	20545	Tray Corner, Ver. 2 (Rh)	
21	20545-01	Tray Corner, Ver. 2 (Lh)	
22	22909	Label Sheet, Reduced Height Location	
23	20614	Label Sheet, Reduced Height Price	
24	20796-01	Edge Trim, Tray Corner	Right Hand Corner Only
25	20955	Tray Body, Reduced Depth (39")	
26	20966	Helix Adapter, Without Hub	
27	22192	Helix Alignment Device, PVC	
28	22250	Assembly, Rail, Snack, Right	
29	22251	Assembly, Rail, Snack, Left	
30	23333	Tray Divider, VER 2, 3-3/8" High	Select Type, Numbers To Form Columns
	23334	Tray Divider, VER 2, 4-7/8"	Select Type, Numbers To Form Columns

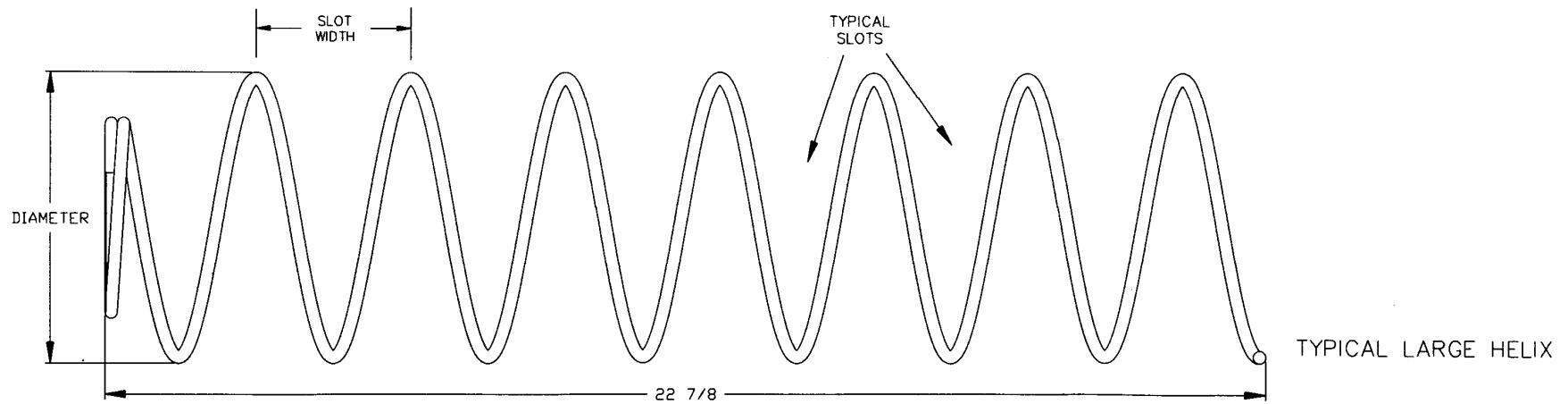
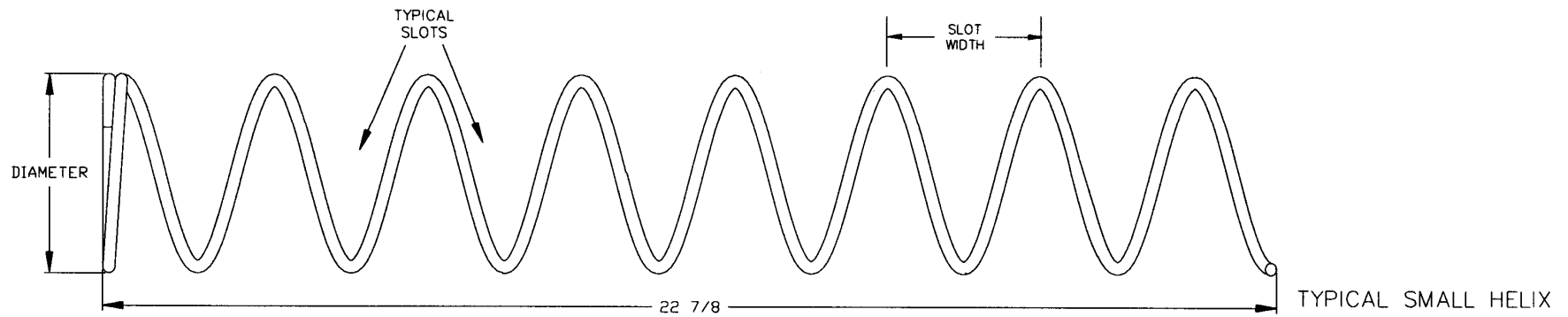
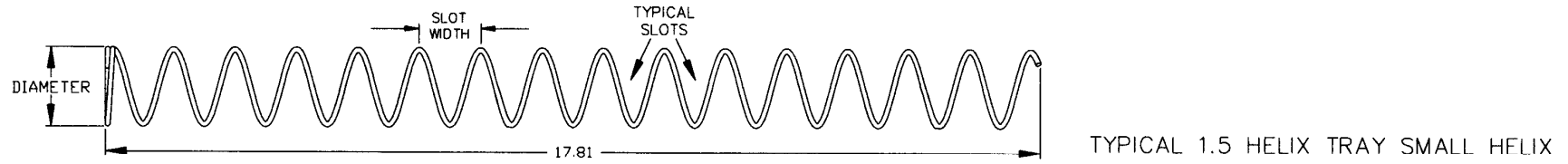
MODEL 39 SCROLLING PRICE TRAY ILLUSTRATION



MODEL 39 SCROLLING PRICE TRAY PARTS LIST

ITEM	PART NO.	PART DESCRIPTION	NOTE
1	20073	TRAY STOP	
2	20073-01	TRAY STOP LEFT	
3	23007	MOTOR, COUNTER CLOCKWISE	
	23007-01	MOTOR, CLOCKWISE	OPTIONAL
4	-----	HELIX	SEE HELIX TABLE
5	20147	HARNESS, TRAY 10 COLUMN	
6	20220	EXTRUSION, CANDY PUSHER	OPTIONAL
7	20021	BAR, CANDY PUSHER	OPTIONAL
8	20545	TRAY CORNER, RH	
9	20545-01	TRAY CORNER, LH	
10	20796-01	EDGE TRIM, TRAY CORNER	
11	20955	TRAY BODY	
12	20966	HELIX ADAPTOR	
13	21138	DIVIDER, STANDARD	
	21139	DIVIDER, HIGH	OPTIONAL
	23664	DIVIDER, EXTRA HIGH	OPTIONAL
14	22192	HELIX ALIGNMENT DEVICE	OPTIONAL
15	23322	SCROLL, PRICE LABEL, 1-20	
	23321	SCROLL, PRICE LABEL, .00-.95	
16	23785	TRAY STIFFENER	
17	23786	TRAY STIFFENER COVER	
18	23787	GUIDE	
19	23791	10 SELECT COVER	OPTIONAL
	23791-01	10 SELECT COVER, NO WINDOWS	OPTIONAL
20	3000	SCREW	
21	3009-02	RIVET	
22	3019	CANOE CLIP	
23	3020	WIRE TIE STANDOFF	
24	3042-01	WIRE TIE, PANEL MOUNT	
25	3111	HELIX EJECTOR	
26	3295-03	RIVET	
27	23292	LOCATION LABEL	

HELIX ILLUSTRATIONS



HELIX PARTS LIST

PART NO.	HELIX DESCRIPTION *	SLOT WIDTH	NUMBER OF SLOTS (PITCH)	HELIX OUTSIDE DIAMETER	TURNS	NOTE
20119-07	Helix, Small CW, Black	2 5/8	7	2.6	CW	Use With 20120-07 As A Set
20120-07	Helix, Small CCW, Black	2 5/8	7	2.6	CCW	
20119-10	Helix, Small CW, Black	1 7/8	10	2.6	CW	Use With 20120-10 As A Set
20120-10	Helix, Small CCW, Black	1 7/8	10	2.6	CCW	
20120-12	Helix, Small CCW, Black	1 7/8	12	2.6	CCW	
20120-15	Helix, Small CCW, Black	1 7/8	15	2.6	CCW	
20120-18	Helix, Small CCW, Black	1 7/8	18	2.6	CCW	
20120-24	Helix, Small CCW, Black	1 7/8	24	2.6	CCW	
21207-15	Helix, 1.5", CCW, Black	1	15	1.5	CCW	Use in 1.5" Helix Tray
21207-25	Helix, 1.5", CCW, Black	9/16	25	1.5	CCW	Use in 1.5" Helix Tray
21336	Helix, 3", CCW, Black	3.5	6	3	CCW	Bottle Tray
21337	Helix, 3", CCW, Black	3.2	6	3	CCW	Bottle Tray
21465-5	Helix, 3.75" CCW, Black	3 ¼	5	3.75	CCW	Large
21465-7	Helix, 3.75" CCW, Black	2 5/8	7	3.75	CCW	Large
21465-9	Helix, 3.75" CCW, Black	2	9	3.75	CCW	Large
21465-10	Helix, 3.75" CCW, Black	1 ¾	10	3.75	CCW	Large
21465-12	Helix, 3.75" CCW, Black	1 ½	12	3.75	CCW	Large
21465-15	Helix, 3.75" CCW, Black	1 ¼	15	3.75	CCW	Large

General Note: Please call AMS if a helix with a special pitch is required. Also, the quantity of helixes required depends on the vendor configuration.

THIS PAGE INTENTIONALLY LEFT BLANK
